

ZA32RJE Parts Manual

ZOOMLION INTELLIGENT ACCESS MACHINERY CO.,LTD.

Add:Tengfei Road 997, Wangcheng District, Changsha, Hunan,PRC

Zip Code:410200

E-mail:awm@zoomlion.com

Tel:400-800-0157



ZOOMLION

ZOOMLION

ZA32RJE PARTS MANUAL

2021.03 A

Foreword

Zoomlion appreciates your choice of our machine for your application. This manual must be read and understood in its entirety before operating the machine.

This manual introduces you parts assembly and significant technical specs in detail for working efficiency improving. Keep this manual properly at all times for looking up.

Do not attempt to service and repair the machine if you do not read and understand this manual. If there is any doubt, please consult local service team for troubleshooting. Zoomlion Intelligent Access Machinery Co., Ltd. does not take the consequence of wrong maintenance.

This manual should be considered a permanent part of your machine and should remain with the machine at all times. When transferring this machine, be sure to transfer this manual to the transferee.

The content is under intellectual property protection, permission is required for a copy or other application.

There might be some tiny differences in details between your machine and the upgraded one due to the continuous improving. For clarification, questions, or additional information regarding any portions of this manual, Contact local service team.

Our company reserves the right to modify this manual as technical improvement without notice.

Thank you for your trust and support for Zoomlion products!

Zoomlion Intelligent Access Machinery Co.,Ltd.

Contents

Foreword	I
Contents	II
Chapter 1 Work Platform	1-1
Work Platform 00773200100000000.....	1-1
Chapter 2 Boom	2-1
Jib 00773200200000000.....	2-1
Upper Boom Assembly 00773200300000000.....	2-3
Chain System 00773200700000000.....	2-7
Tower Boom Assembly 00773200400000000	2-9
Chapter 3 Turntable	3-1
Turntable 00773200800000000.....	3-1
Hood 00773201100000000	3-5
Counterweight 00773201000000000	3-7
Slewing Mechanism 00773200900000000	3-9
Chapter 4 Chassis	4-1
Chassis 00773202800000000.....	4-1
Chapter 5 Power System	5-1
Power Line 00773206200230050	5-1
Chapter 6 Hydraulic System	6-1
Main valve Assembly of Turntable 00773205201800000	6-1
Power Unit Assembly of Turntable 00773205201800000	6-3
High Pressure Filter installation of Turntable 00773205201800000	6-5
Low Pressure Filter Installation of Turntable 00773205201800000	6-7
Main Boom Lifting Balance Valve Installation 00773205201000000.....	6-9
Tower Boom Balance Valve Assembly 00773205200600000	6-11
Main Boom Telescopic Balance Valve Installation 00773205200800000.....	6-13
Main Boom Platform Valve Installation 00773205200800000	6-15
Jib Lifting Balance Valve Assembly 00773205201000000.....	6-17
Platform Rotary Actuator Joint Assembly 00773205201200000	6-19

Contents

Jib Rotary Actuator Joint Assembly 00773205201200000	6-21
Upper Leveling Cylinder Joint Assembly 00773205201200000	6-23
Lower Leveling Cylinder Joint Assembly 00773205201200000.....	6-25
Rotary Motor Joint Assembly 00773205201200000	6-27
Steering Cylinder Joint Assembly 00773205201600000	6-29
Chapter 7 Electrical System	7-1
Turntable Electrical Control Box Assembly 00773206200220000	7-1
Platform Electrical Box Assembly 00773206200210000	7-3
Turntable Cable 00773206200230010	7-5
Boom Wires 00773206200230030	7-7
Chassis Wires 00773206200230020.....	7-9
Platform Wires 00773206200230040/ Chain Wires Change 00773206200240010.....	7-11

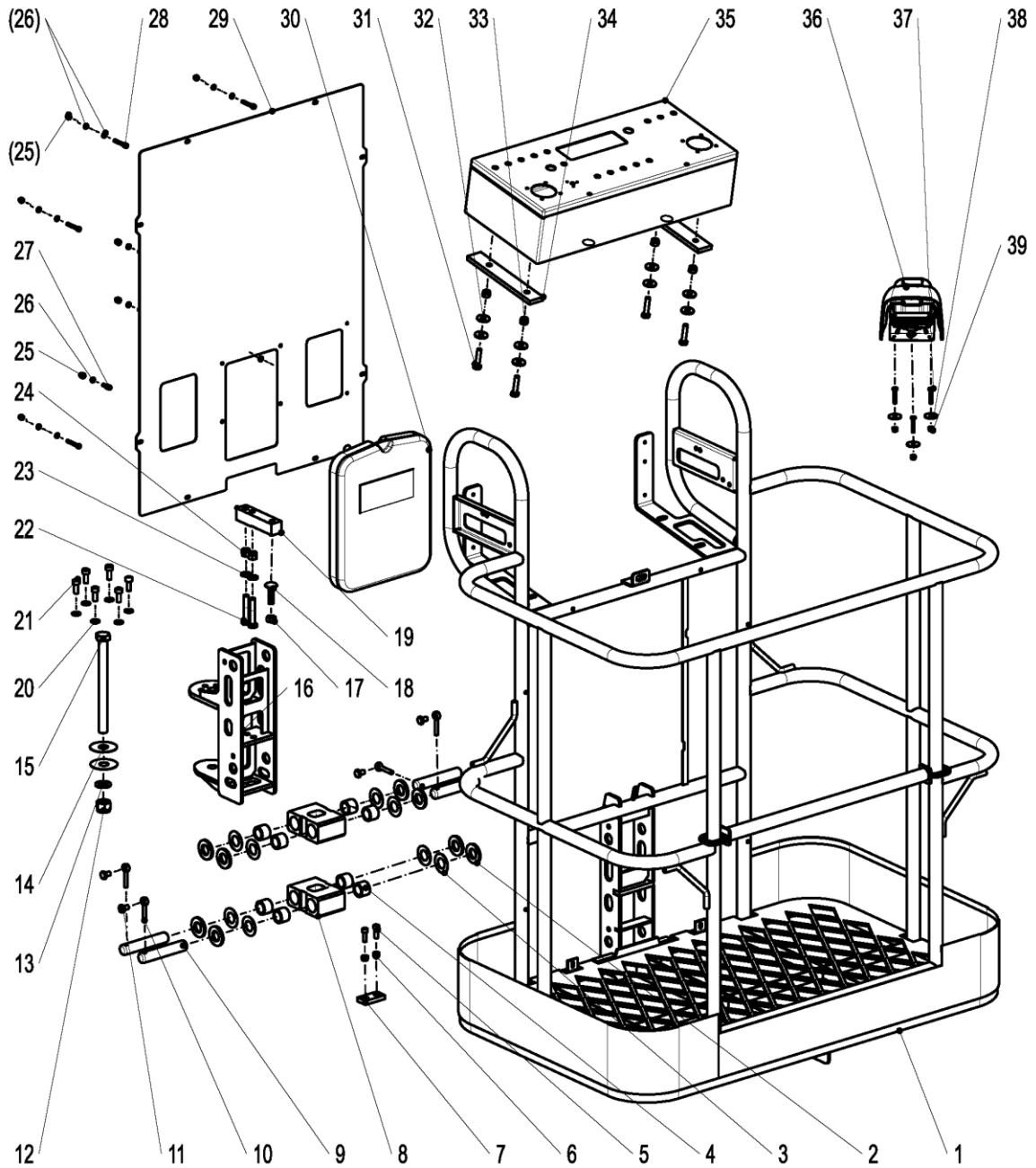
ZOOMLION

Parts Manual

Section 1 Work Platform



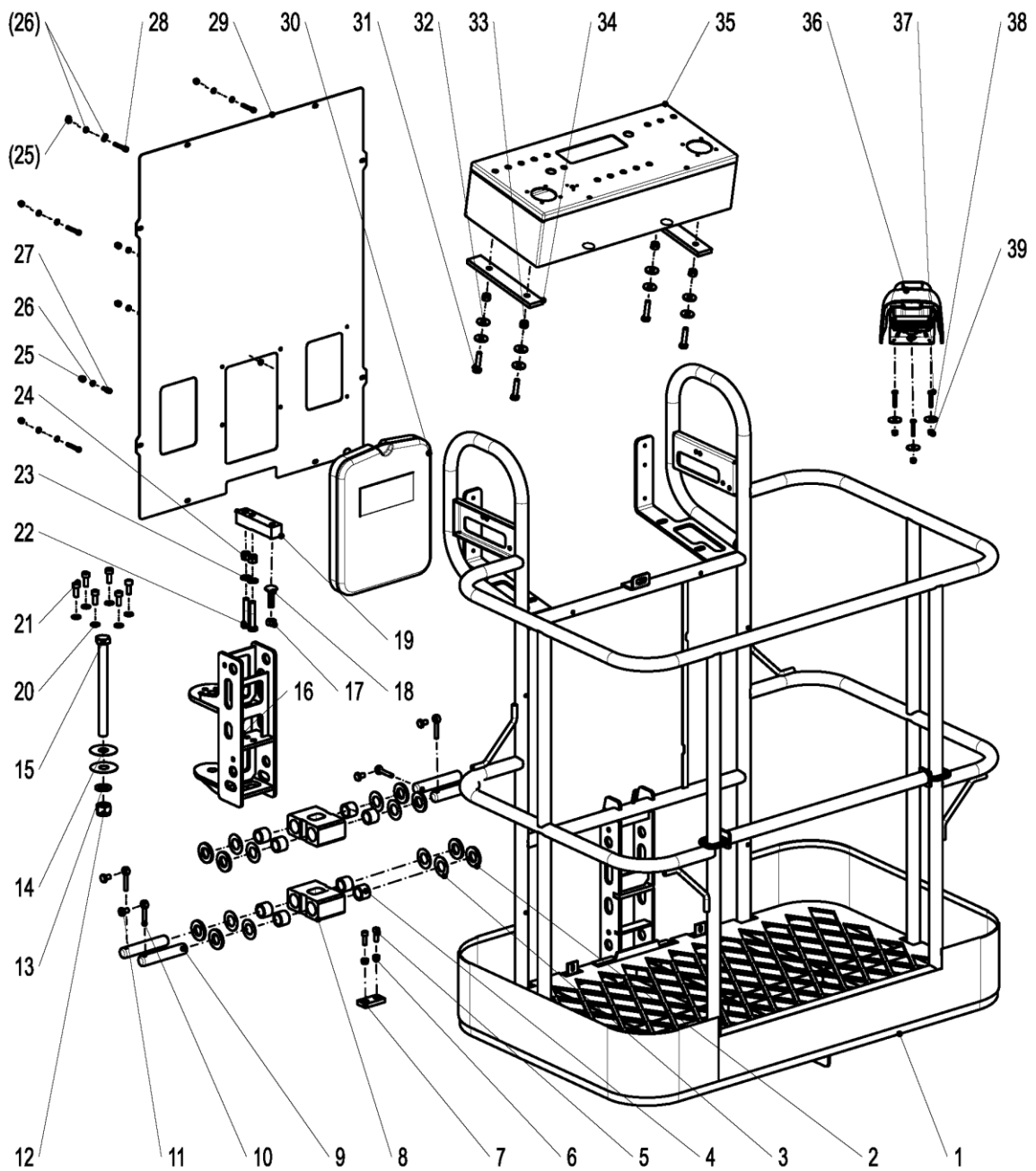
Work Platform 0077320010000000



Work Platform 0077320010000000

NO.	Material No.	Item and Spec	Qty	Remark
1	00773200100410000	Platform welds	1	
2	00773400130401040	Block I	8	
3	00773400130401050	Block II	8	
4	00771900311001240	Roller bearing	8	
5	1040103112	Screw M8×25-8.8	2	GB/T70.1
6	1040200503	Nut M8-8	2	GB/T889.1
7	00773400130401060	Block III	1	
8	00773200100001010	Linkage	2	
9	00773200100001020	Axle I	4	
10	00773702800001380	Stop pin	4	
11	1040004646	Bolt M10×15-8.8	4	GB/T5783
12	1040200741	Nut M20-10	1	GB/T889.1
13	1040301033	Washer 20-300HV	1	GB/T97.1
14	00773200100001030	Adjustable pad	2	
15	1040006410	Bolt M20×240-10.9	1	GB/T5782
16	00773200100200000	Transition seat	1	
17	1040201381	Nut M12-8	1	GB/T6170
18	00773400130401070	Round head bolt	1	
19	1029907627	Load cell	1	
20	1040302489	Washer 10-200HV	6	GB/T97.1
21	1040006553	Bolt M10×25-10.9	6	GB/T70.1
22	1040001703	Bolt M12×65-10.9	2	GB/T5782
23	1040302490	Washer 12-200HV	2	GB/T97.1
24	1040201163	Nut M12-10	2	GB/T889.1
25	1040201902	Nut M6-6	12	GB/T802
26	1040300771	Washer 6-200HV	24	GB/T97.1
27	1040102774	Screw M6×15-8.8	6	GB/T70.1
28	1040102773	Screw M6×40-8.8	6	GB/T70.1
29	00773200100401010	Baffle	1	
30	1999904986	Document box	1	
31	1040004508	Bolt M10×45-8.8	4	GB/T5783
32	1040302512	Washer 10-200HV	8	GB/T96.1
33	1040200504	Nut M10-8	4	GB/T889.1

Work Platform 0077320010000000



Work Platform 00773200100000000

NO.	Material No.	Item and Spec	Qty	Remark
34	00773200100630000	Rubber pad	2	
35	00773206200210000	Platform electric console assembly	1	
36	1020521022	Foot switch	1	
37	1040004553	Bolt M6×35-8.8	3	GB/T5783
38	00773406300201010	Gasket	3	
39	1040201896	Nut M6-8	3	GB/T889.1

ZOOMLION

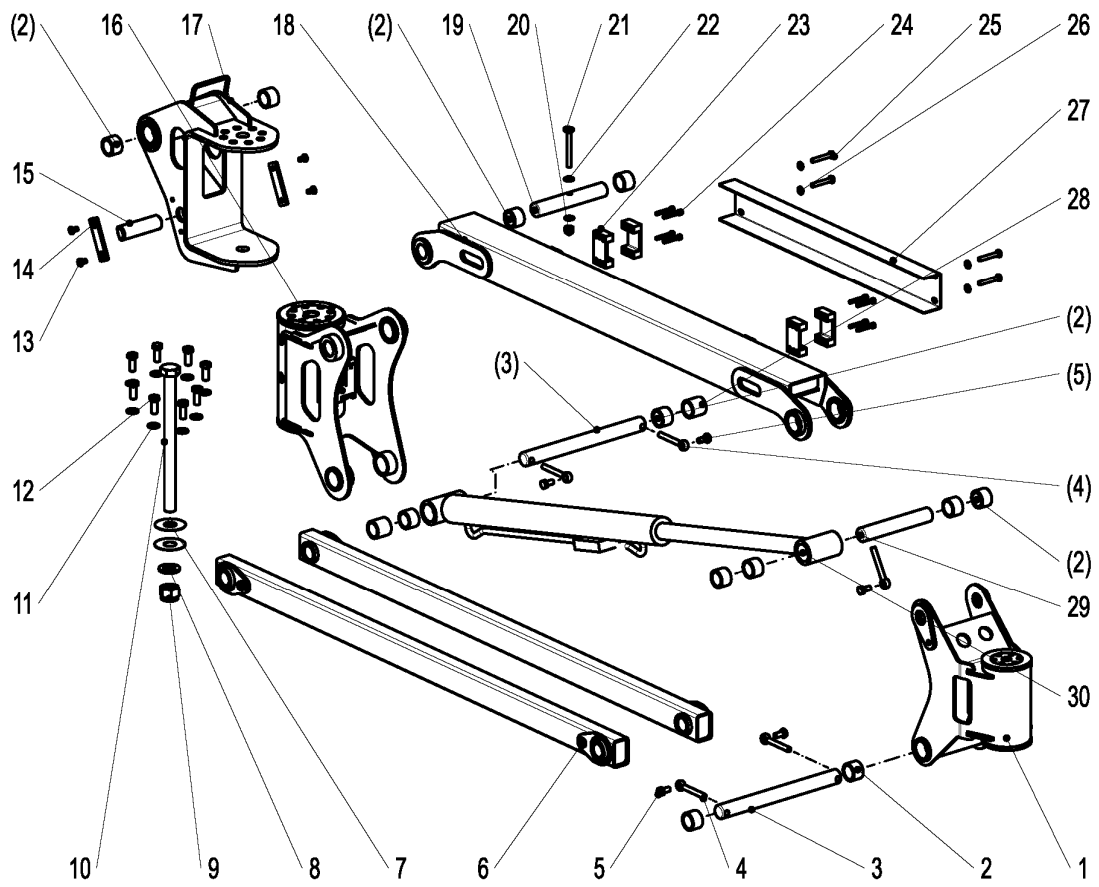
Parts Manual

Section 2 Boom



Jib 0077320020000000

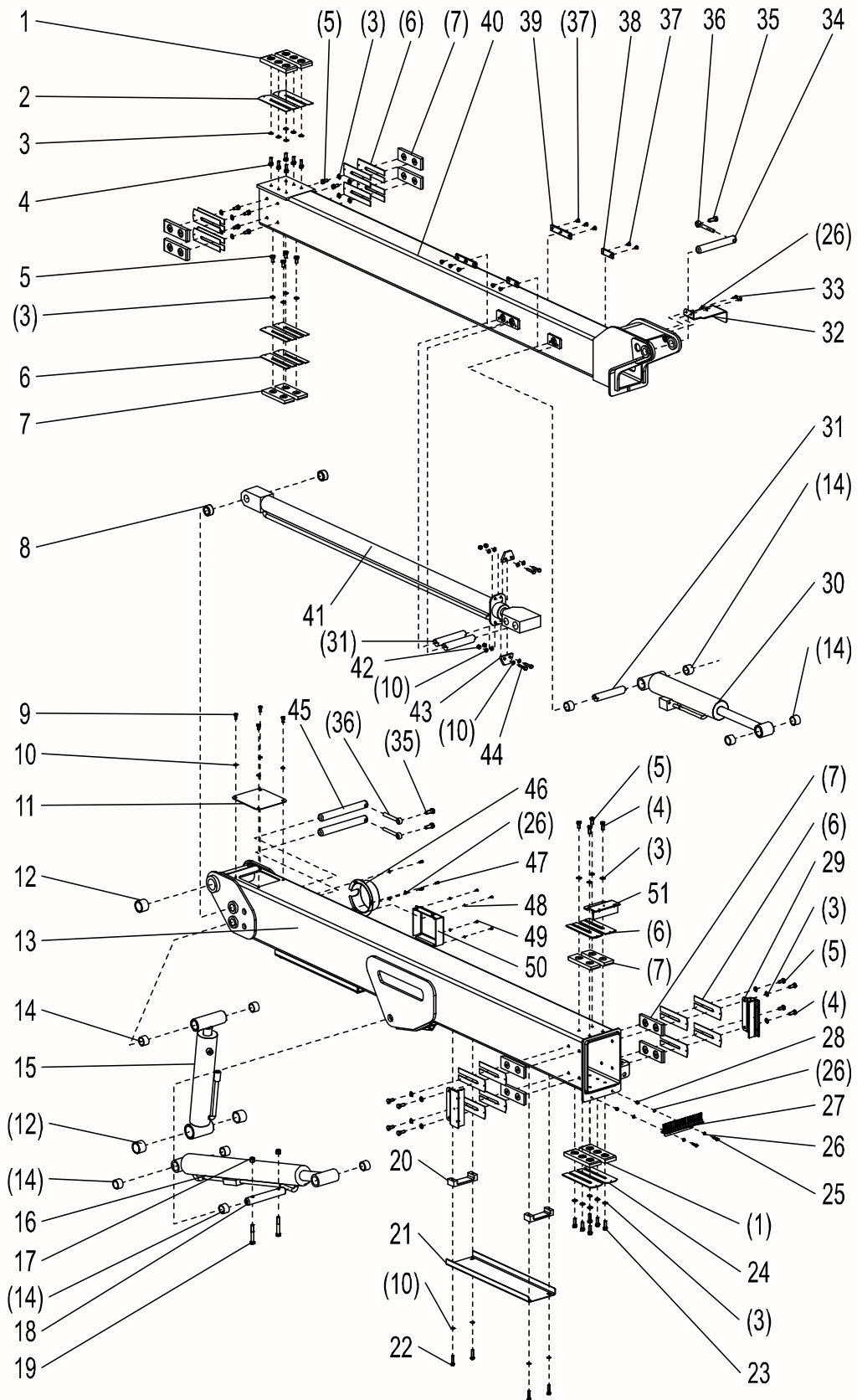
BOOM



Jib 0077320020000000

NO.	Material No.	Item and Spec	Qty	Remark
1	1010201709	Rotary actuator	1	
2	00773200200001010	Bearing I	12	
3	00773200200001050	Pin III	2	
4	00773400300001200	Stop pin	5	
5	1040002433	Bolt M10×20-8.8	5	GB/T5783
6	00773200200800000	Lower linkage welds	2	
7	00773400100401030	Adjustable pad	2	
8	1040301511	Washer 24-200HV	1	GB/T97.1
9	1040201111	Nut M24-10	1	GB/T889
10	1040006411	Bolt M24×310-10.9	1	GB/T5782
11	1040302490	Washer 12-200HV	8	GB/T97.1
12	1040004653	Bolt M12×30-10.9	8	GB/T5783
13	1040103076	Screw M8×16-8.8	4	GB/T70.3
14	00773700400001290	Snap-gauge	2	
15	00773200200001110	Pin IV	1	
16	1010201710	Rotary actuator	1	
17	00773200200200000	Support welds	1	
18	00773200200600000	Upper linkage welds	1	
19	00773200200001020	Pin I	1	
20	1040200504	Nut M10-8	1	GB/T889.1
21	1040004581	Bolt M10×80-8.8	1	GB/T5783
22	1040302489	Washer 10-200HV	2	GB/T97.1
23	00773200200001070	Pipeline clamp	4	
24	1040102773	Screw M6×40-8.8	8	GB/T70.1
25	1040004522	Bolt M8×50-8.8	4	GB/T5783
26	1040301515	Washer 8-200HV	4	GB/T97.1
27	00773200200001090	Pipeline guard	1	
28	00773200200001060	Bearing II	2	
29	00773200200001030	Pin III	1	
30	00773200201200000	Jib lifting cylinder	1	

Upper Boom Assembly 0077320030000000

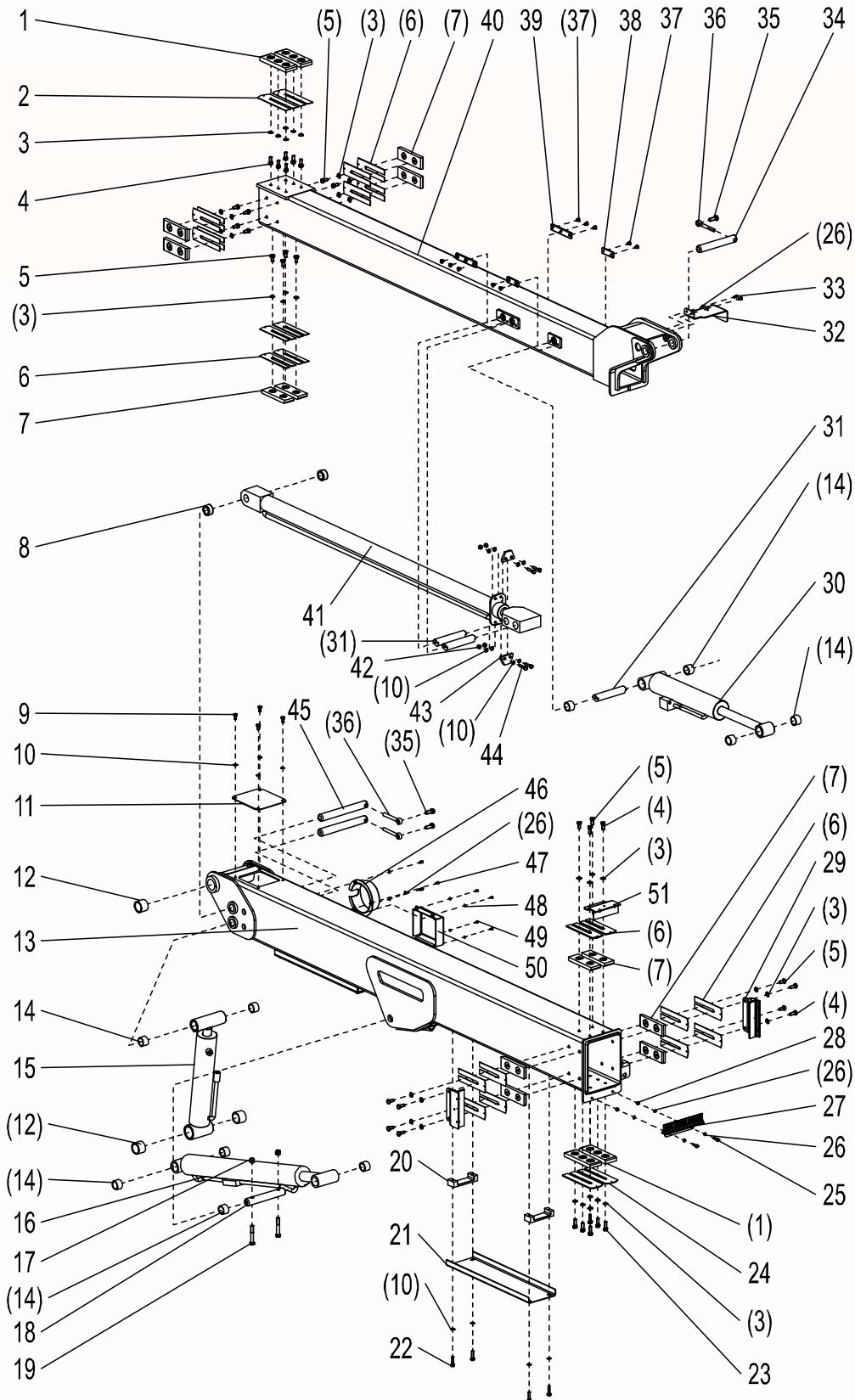


BOOM

Upper Boom Assembly 00773200300000000

NO.	Material No.	Item and Spec	Qty	Remark
1	00773400312600000	Slider assembly	4	
2	00773400300001120	Adjustable gasket III Tp1	2	
3	1040302489	Washer 10-200HV	36	GB/T97.1-2002
4	1040002434	Bolt M10×25-8.8	12	GB/T5783-2016
5	1040002433	Bolt M10×20-8.8	18	GB/T5783-2000
6	00771900301801050	Adjustable gasket Tp2	24	
7	00773400312800000	Slider assembly	12	
8	00773200300001130	Spacer bush	2	
9	1040004517	Bolt M8×16-8.8	4	GB/T5783-2000
10	1040301515	Washer 8-200HV	12	GB/T97.1-2002
11	00773400310001200	Small cover	1	
12	00773400300001210	Bearing	2	
13	00773200300200000	Base boom of the upper boom	1	
14	00773200200001010	Bearing I	10	
15	00773200300800000	Lower leveling cylinder	1	
16	00773200301000000	Lifting cylinder of upper boom	1	
17	1040200507	Nut M12-8	2	GB/T889.1-2000
18	00773200300001020	Pin	1	
19	1040004605	Bolt M12×75-8.8	2	GB/T5782-2000
20	00773200300001110	Hose seat	4	
21	00773200300001091	Pipeline cover	2	
22	1040004619	Bolt M8×35-8.8	8	GB/T5783-2000
23	1040004565	Bolt M10×30-8.8-DKL	6	GB/T5783-2016
24	00773200300001200	Adjustable gasket I Tp3	2	
25	1040001640	Bolt M6×25-A2-70	2	GB/T5783-2000
26	1040300771	Washer 6-200HV	9	GB/T97.1-2002
27	00773200301400000	Lower dust-proof brush	1	
28	1040201896	Nut M6-8	2	GB/T889.1-2015
29	00773200301600000	Side brush	2	
30	00773200301200000	Upper leveling cylinder	1	
31	00773200300001160	Pin	3	
32	00773200300001120	Platform control valve mounting plate	1	
33	1040000096	Bolt M6×12-8.8	2	

Upper Boom Assembly 0077320030000000



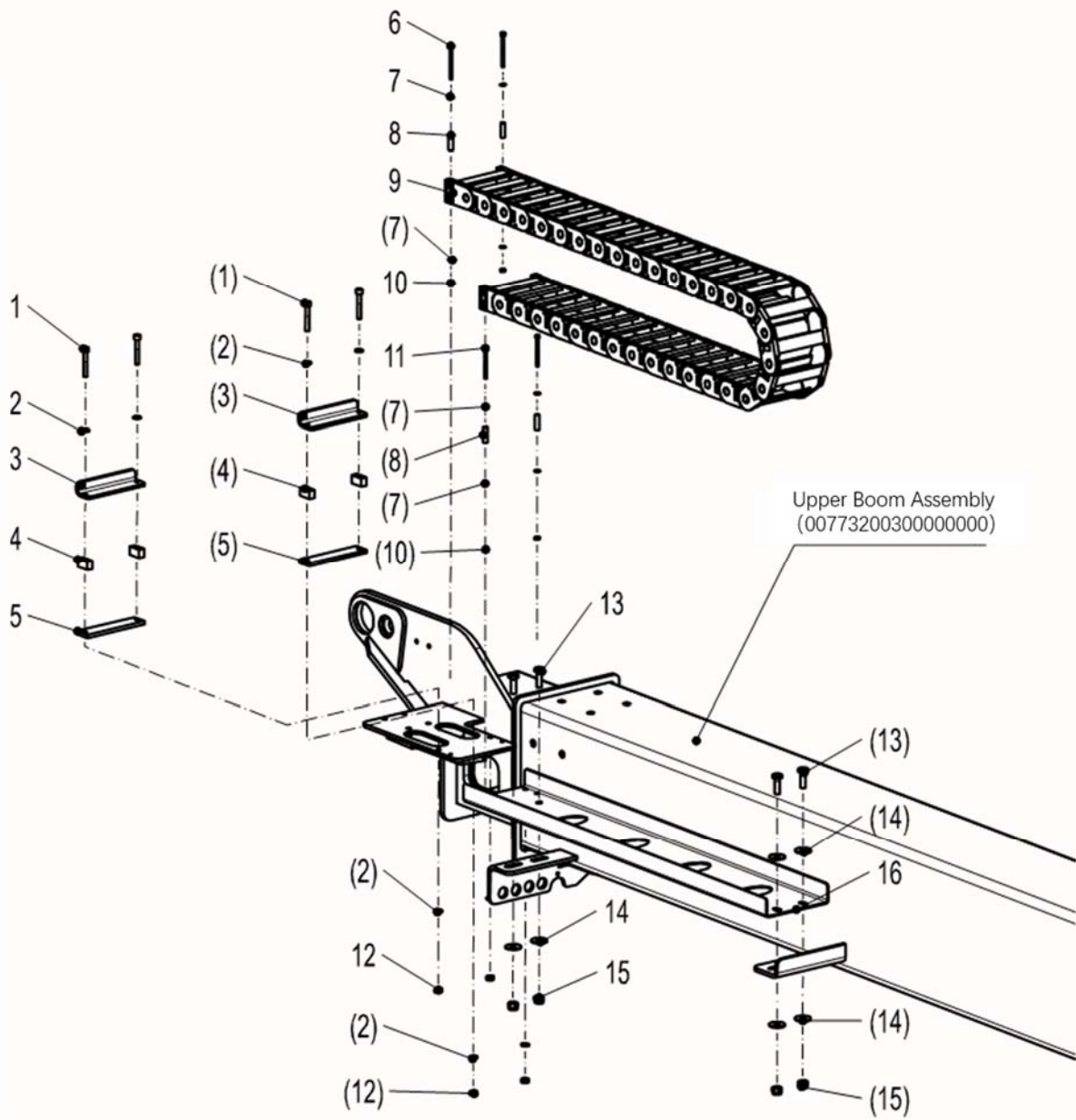
BOOM

Upper Boom Assembly 00773200300000000

NO.	Material No.	Item and Spec	Qty	Remark
34	00773200300001030	Pin	1	
35	1040004511	Bolt M12×30-8.8	3	GB/T5783-2000
36	00773400200001070	Stop pin	3	
37	1040101606	Screw M8×12-8.8	10	GB/T70.3-2000
38	00773200300001190	Snap-gauge	2	
39	00773200300001170	Snap-gauge	2	
40	00773200300400000	Telescopic boom of the upper boom	1	
41	00773200300600000	Main boom telescopic cylinder	1	
42	1040200503	Nut M8-8	4	GB/T889.1-2000
43	00773200310001060	Block	2	
44	1040002458	Bolt M8×40-8.8	4	GB/T5783-2000
45	00773200300001010	Pin	1	
46	00773700302400000	Protective cover	1	
47	1040102778	Screw M6×10-8.8	3	GB/T70.1-2000
48	1040302410	Washer 4-200HV	4	GB/T97.1-2002
49	1040004591	Bolt M4×8-8.8	4	GB/T5783-2000
50	00773700300001270	Sensor cover	1	
51	00773200301800000	Upper dust-proof brush	1	

Chain System 0077320070000000

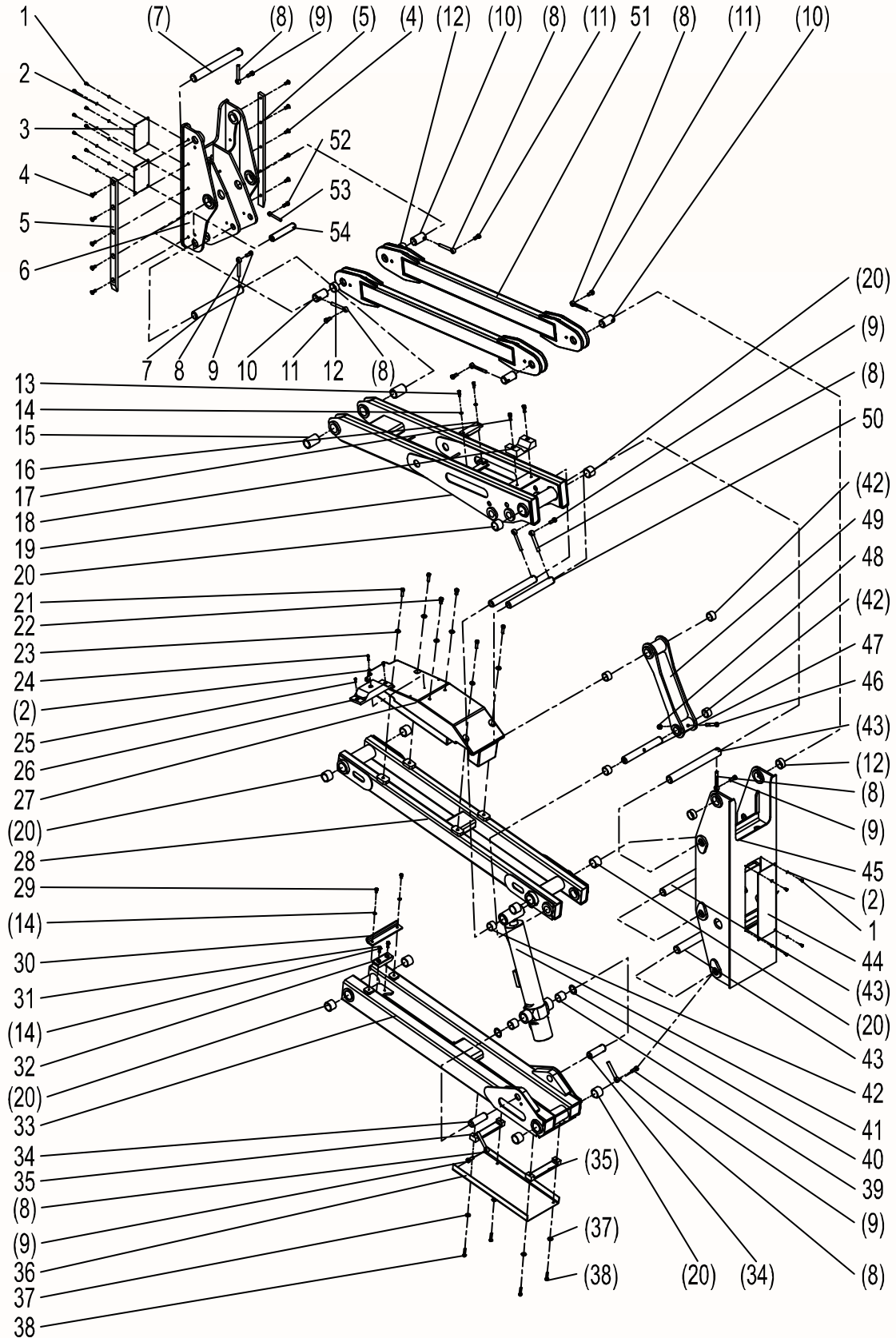
BOOM



Chain System 00773200700000000

NO.	Material No.	Item and Spec	Qty	Remark
1	1040102773	Screw M6×40-8.8	4	GB/T70.1-2000
2	1040300771	Washer 6-200HV	8	GB/T97.1-2002
3	00773200700001040	Bending mounting plate	2	
4	00773200700001030	Hose seat I	4	
5	00773200700001020	Hose seat	2	
6	1040102777	Screw M4×50-8.8	2	GB/T70.1-2000
7	1040302410	Washer 4-200HV	8	GB/T97.1-2002
8	00773200700001050	Pipe jacking	4	
9	00773200700001010	Chain mechanism	1	
9a	1109901020	Chain bar 25000.09	36	
9b	1109901019	Chain sections 2500.09.075.0	32	
9c	1109901017	Joint link pin 24101.09.2	2	
9d	1109901018	Joint link hole 24101.09.1	2	
10	1040201772	Nut M4-A2-70	4	GB/T6170-2000
11	1040100349	Screw M4×45-8.8	2	GB/T70.1-2000
12	1040201865	Nut M6-8	4	GB/T6170-2000
13	1040004519	Bolt M8×25-8.8	4	GB/T5783-2000
14	1040302480	Washer 8-200HV	6	GB/T96.1-2002
15	1040200503	Nut M8-8	4	GB/T889.1-2000
16	00773200700001070	Support plate	1	

Tower Boom Assembly 0077320040000000

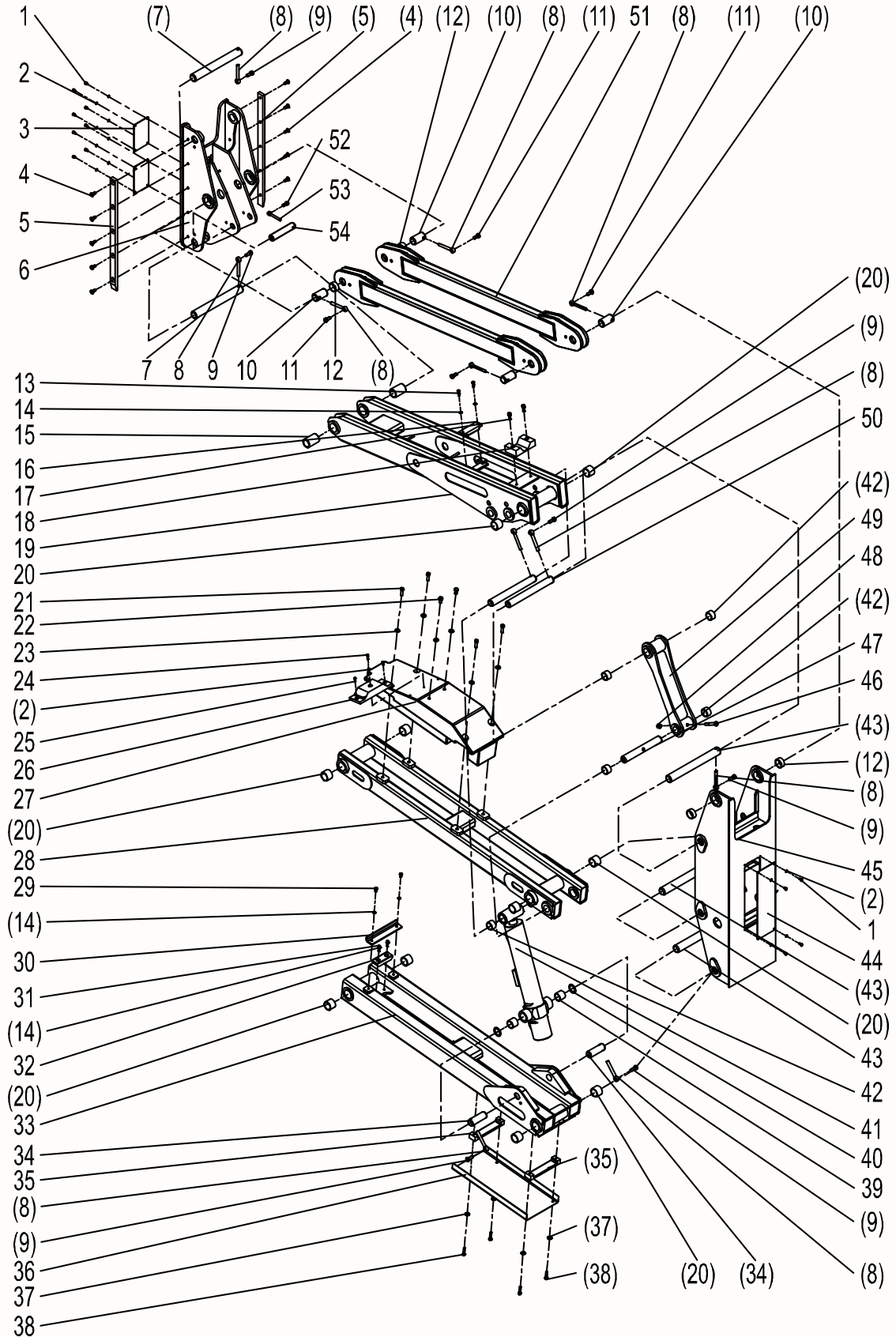


BOOM

Tower Boom Assembly 0077320040000000

NO.	Material No.	Item and Spec	Qty	Remark
1	1040002738	Bolt M6×12-A2-70	12	GB/T5783-2000
2	1040300771	Washer 6-200HV	13	GB/T97.1-2002
3	00773200400001170	Seal plate I	2	
4	1040102757	Screw M10×25-8.8	10	GB/T70.3-2000
5	00773200400001202	Protective plate I	2	
6	00773200402200000	Upper upright	1	
7	00773200400001010	Axle A1	2	
8	00773400200001070	Stop pin	13	
9	1040004511	Bolt M12×30-8.8	4	GB/T5783-2000
10	00773200400001080	Axle A8	4	
11	1040002436	Bolt M12×25-8.8		GB/T5783-2000
12	00773200400001230	Bearing	4	
13	1040103302	Screw M8×22-10.9	2	GB/T70.1-2000
14	1040301515	Washer 8-200HV	6	GB/T97.1-2002
15	00771602800001330	Lubricating-free bearing I	2	
16	00773200400001151	Pipe clamp	1	
17	1040101492	Screw M10×25-8.8	2	GB/T70.1-2000
18	00773200400001220	Block	1	
19	00773200400800000	Linkage III	1	
20	00773400300001210	Bearing	10	
21	1040101567	Screw M12×35-10.9-DKL	4	GB/T70.1-2000
22	1040005846	Bolt M12×20-8.8	2	GB/T5783-2000
23	1040302490	Washer 12-200HV	6	GB/T97.1-2002
24	1040102372	Hexagon socket cap screws M6×20-A2-70	1	GB/T70.1-2000
25	1040100765	Screw M6×20-8.8	2	GB/T70.3-2000
26	00773200400001140	Pad	1	
27	00773200400401080	Tower boom counterweight	1	
28	00773200400400000	Linkage II	1	
29	1040004590	Bolt M8×14-8.8	2	GB/T5783-2000
30	00773200400001120	Baffle I	1	
31	1040103112	Screw M8×25-8.8	2	GB/T70.1-2000
32	00773200400001110	Nylon block	1	
33	00773200400200000	Linkage I	1	
34	00773200400001060	Axle A6	2	

Tower Boom Assembly 0077320040000000



BOOM

Tower Boom Assembly 0077320040000000

NO.	Material No.	Item and Spec	Qty	Remark
35	00773200400001100	Pipe clamp	2	
36	00773200400001131	Seal plate	1	
37	1040302480	Washer 8-200HV	4	
38	1040002458	Bolt M8×40-8.8	4	GB/T5783-2000
39	00773700200001010	Bearing	2	
40	00773200300001150	Adjustable gasket	2	
41	00773200401800000	Tower boom lifting cylinder	1	
42	00773400200001010	Bearing	6	
43	00773200400001070	Axle A7	3	
44	00773200400001180	Seal plateII	1	
45	00773200400600000	Lower upright	1	
46	1040004657	Bolt M12×80-8.8	1	
47	00773200400001090	Axle A9	1	
48	1040200507	Nut M12-8	1	GB/T889.1-2000
49	00773200401000000	Pull rod	1	
50	00773200400001050	Axle A5	2	
51	00773200401200000	Linkage IV	2	
52	1040002434	Bolt M10×25-8.8	1	GB/T5783-2016
53	00773400300001200	Stop pin	1	
54	00773200400001040	Axle A4	1	

ZOOMLION

Parts Manual

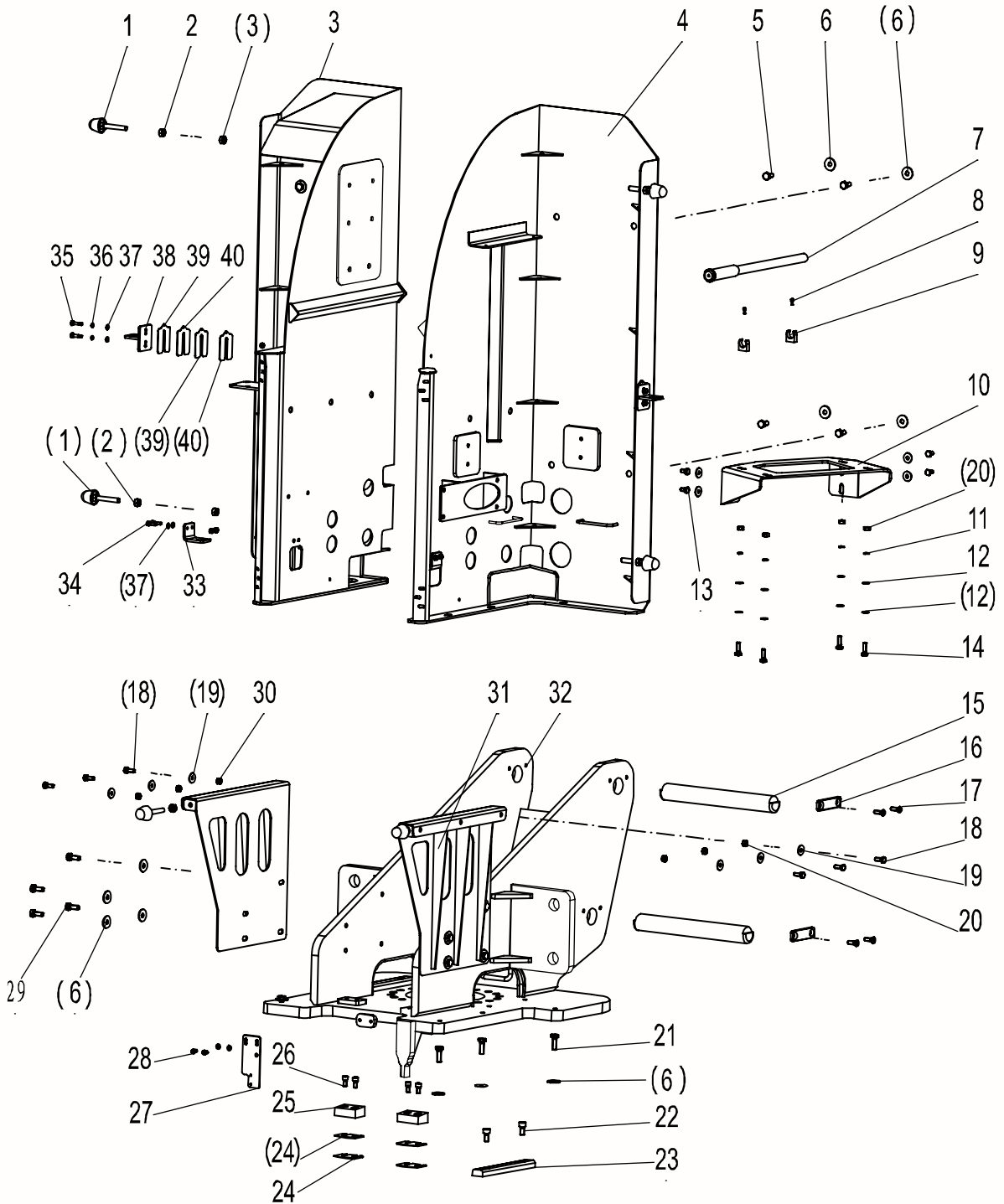
Section 3 Turntable



Turntable 0077320080000000

回转台

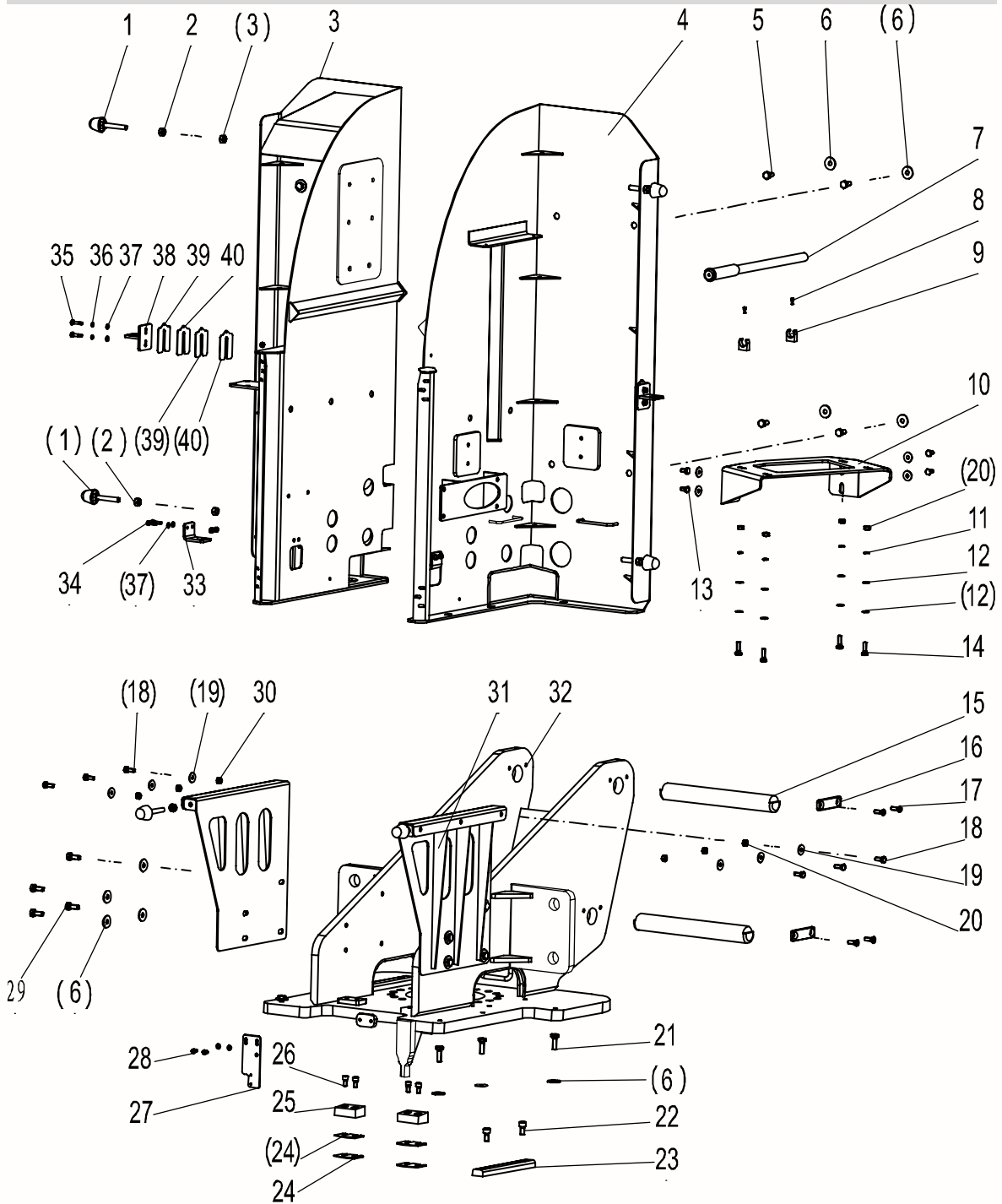
TURNTABLE



Turntable 00773200800000000

NO.	Material No.	Item and Spec	Qty	Remark
1	1040004678	Door stopper bolt M10×70	6	
2	1040200113	Nut M10-8	6	GB/T6170-2000
3	00773200800400000	Left bracket	1	
4	00773200800600000	Right bracket	1	
5	1040002433	Bolt M10×20-8.8	8	GB/T5783-2000
6	1040302512	Washer 10-200HV	22	GB/T96.1-2002
7	00773700810800000	Manual valve tools	1	
8	1040101846	Screw	2	M4×10-8.8
9	00773700810001050	Shelf	2	
10	00773200801800000	Electric control box bracket	1	
11	1040301510	Washer	4	GB/T93-1987 8
12	1040301515	Washer 8-200HV	8	GB/T97.1-2002
13	1040004590	Bolt M8×14-8.8	4	GB/T5783-2000
14	1040004519	Bolt M8×25-8.8	4	GB/T5783-2000
15	00773200800001010	Pin I	2	
16	00773700400001290	Card board	4	
17	1040103558	Screw M8×25-8.8	8	GB/T70.3-2008
18	1040004518	Bolt M8×20-8.8	6	GB/T5783-2000
19	1040302480	Washer 8-200HV	10	GB/T96.1-2002
20	1040201089	Nut M8-8	4	GB/T6170-2000
21	1040004565	Bolt M10×30-8.8-DKL	6	GB/T5783-2016
22	1040102761	Screw M10×20-8.8	4	GB/T70.1-2000
23	00773200800001080	Pipeline anti-wear pad	2	
24	00773200800001020	Adjustable pad	4	
25	00773200800001030	Plastic pad	2	
26	1040103111	Screw M8×16-8.8	4	GB/T70.1-2000
27	00773200800001050	Rotary limit support	1	
28	1040102778	Screw M6×10-8.8	2	GB/T70.1-2000
29	1040002434	Bolt M10×25-8.8	8	GB/T5783-2000
30	00773200801200000	Left holder	1	
31	00773200801400000	Right holder	1	
32	00773200800200000	Turntable welds	1	

Turntable 0077320080000000



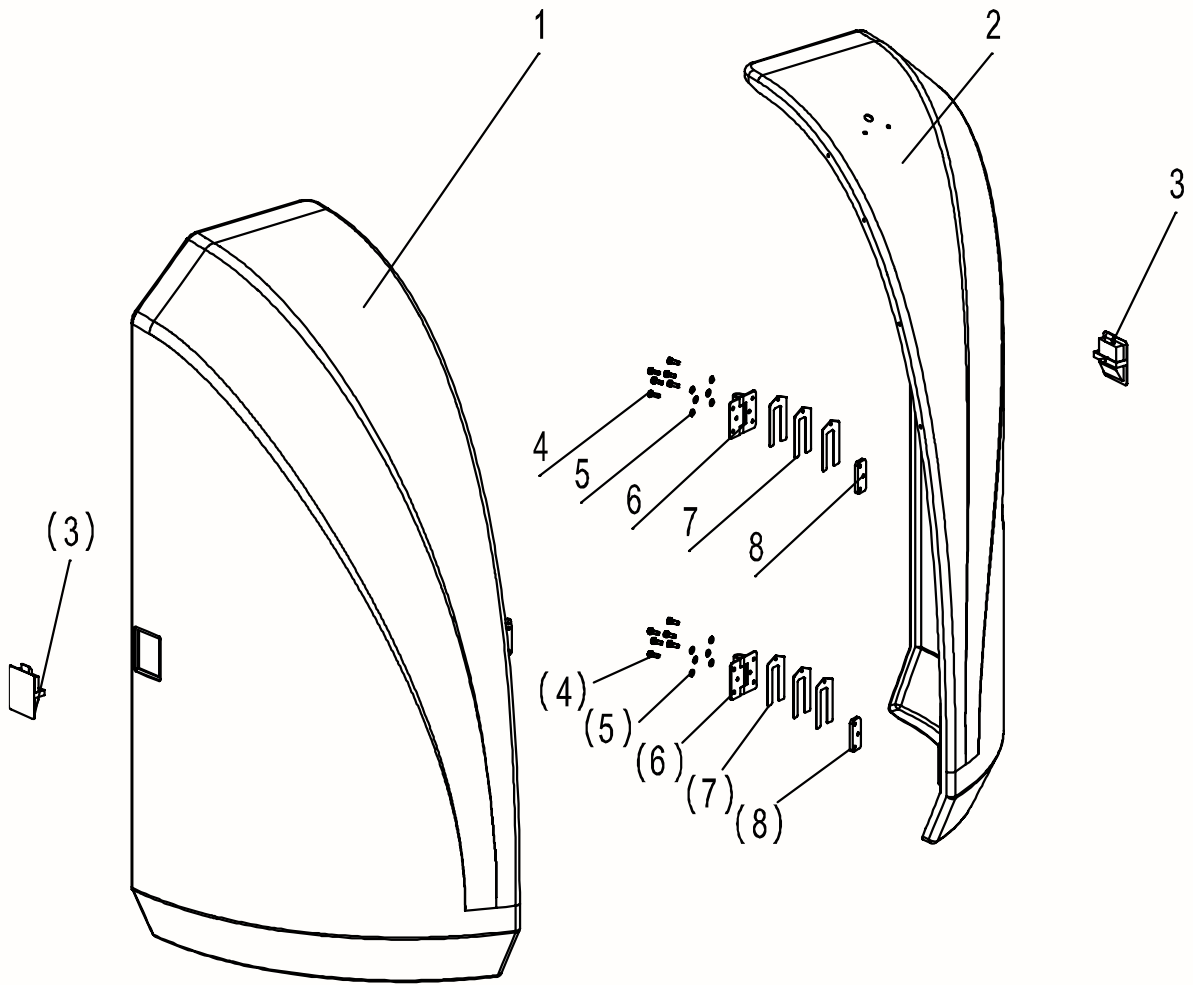
TURNTABLE

Turntable 00773200800000000

NO.	Material No.	Item and Spec	Qty	Remark
33	00773200800001070	Limit installation bracket	2	
34	1040102372	Hexagon socket cap screws	4	GB/T70.1-2000
35	1040001640	Bolt M6×25-A2-70	4	GB/T5783-2000
36	1040301610	Washer 6	4	GB/T93-1987
37	1040300771	Washer 6-200HV	10	GB/T97.1-2002
38	00773200801900000	Door lock	2	
39	00773200800001040	Door lock adjustable gasket I	4	
40	00773200800001060	Door lock gasket II	4	

Hood 0077320110000000

TURNTABLE



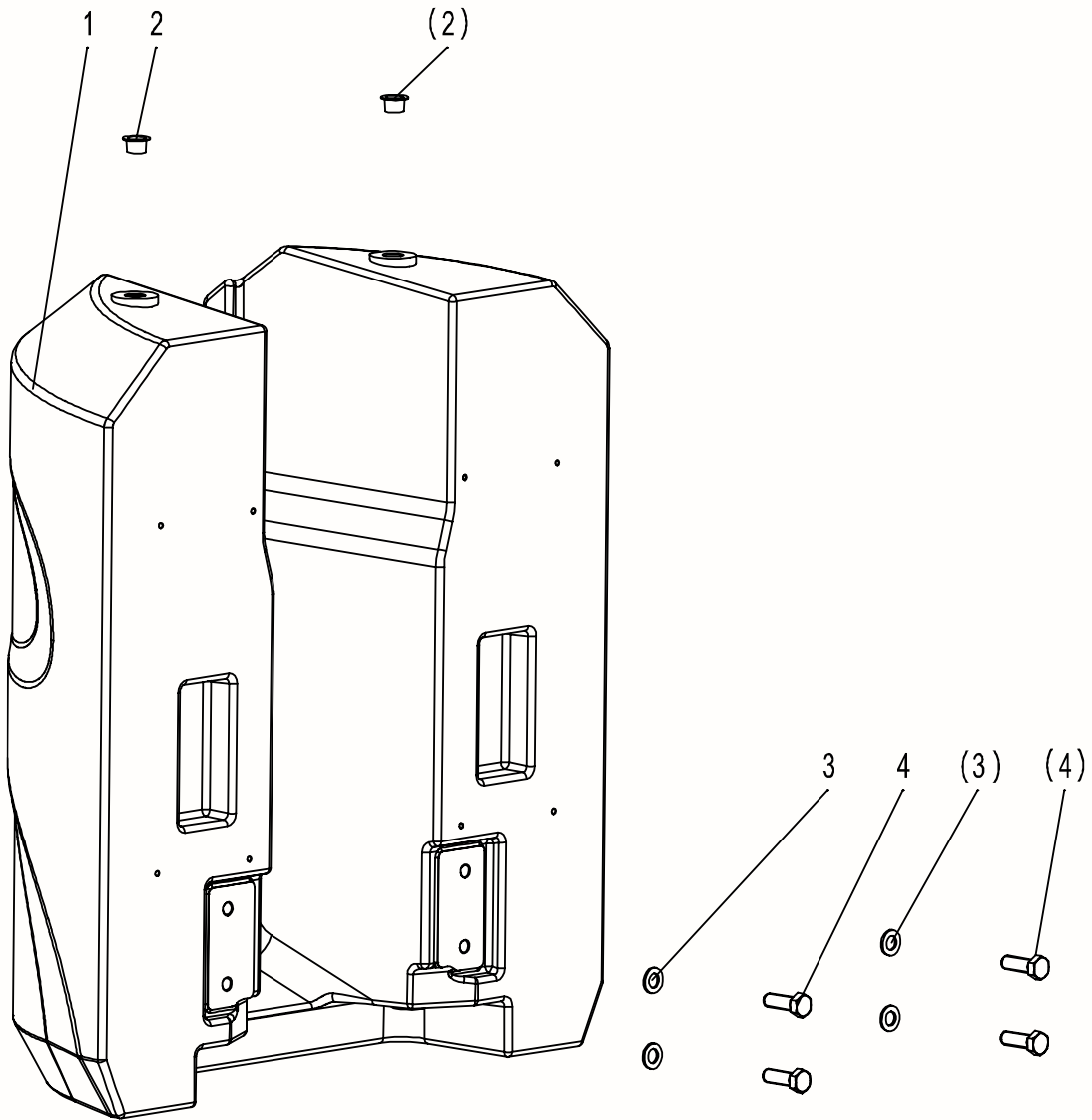
Hood 00773201100000000

NO.	Material No.	Item and Spec	Qty	Remark
1	00773201100400000	Right hood assembly	1	
2	00773201100200000	Left hood assembly	1	
3	1109800044	Tongue lock	2	
4	1040002555	Bolt M6×16-A2-70	24	GB/T5783-2000
5	1040300771	Washer 6-200HV	24	GB/T97.1-2002
6	1159901036	Spring hinge	4	
7	00773201100001010	Hinge adjustable gasket	12	
8	1110100355	Gas spring	4	

Counterweight 0077320100000000

3201000000

TURNTABLE

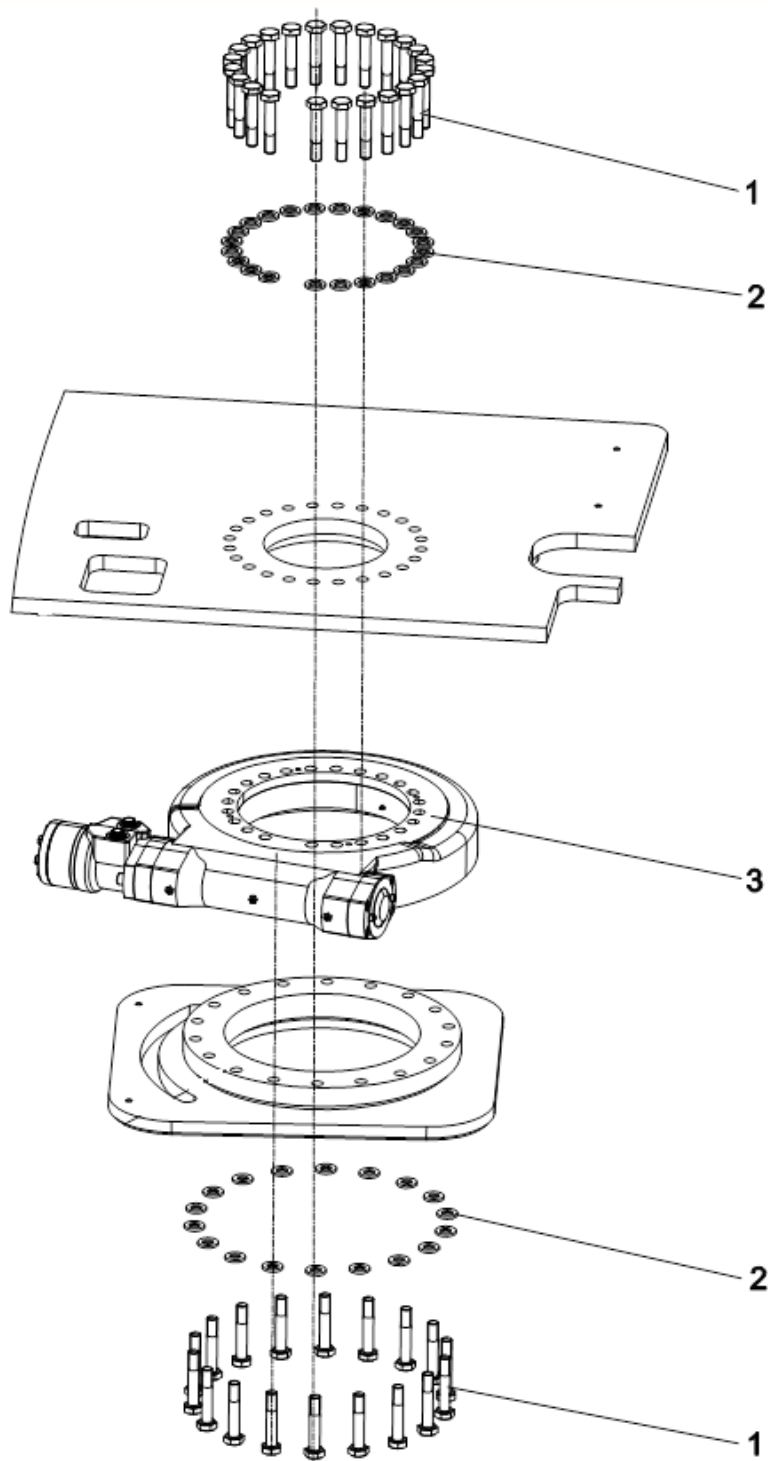


Counterweight 00773201000000000

NO.	Material No.	Item and Spec	Qty	Remark
1	00773201000001010	Counterweight block	1	
2	1109900921	Rubber plug M36	2	
3	1040301511	Washer 24-200HV	4	GB/T97.1-2002
4	1040005848	Bolt M24×70-10.9	4	GB/T5783-2000

Slewing Mechanism 0077320090000000

回转支承



TURNABLE

Slewing Mechanism 00773200900000000

NO.	Material No.	Item and Spec	Qty	Remark
1	1040006354	Bolt M16×90-10.9	19	GB/T5782-2000
2	1040301016	Washer 16-300HV	37	GB/T97.1-2002
3	1030202593	Rotary reducer	1	
4	1040006355	Bolt M16×100-10.9	18	GB/T5782-2000

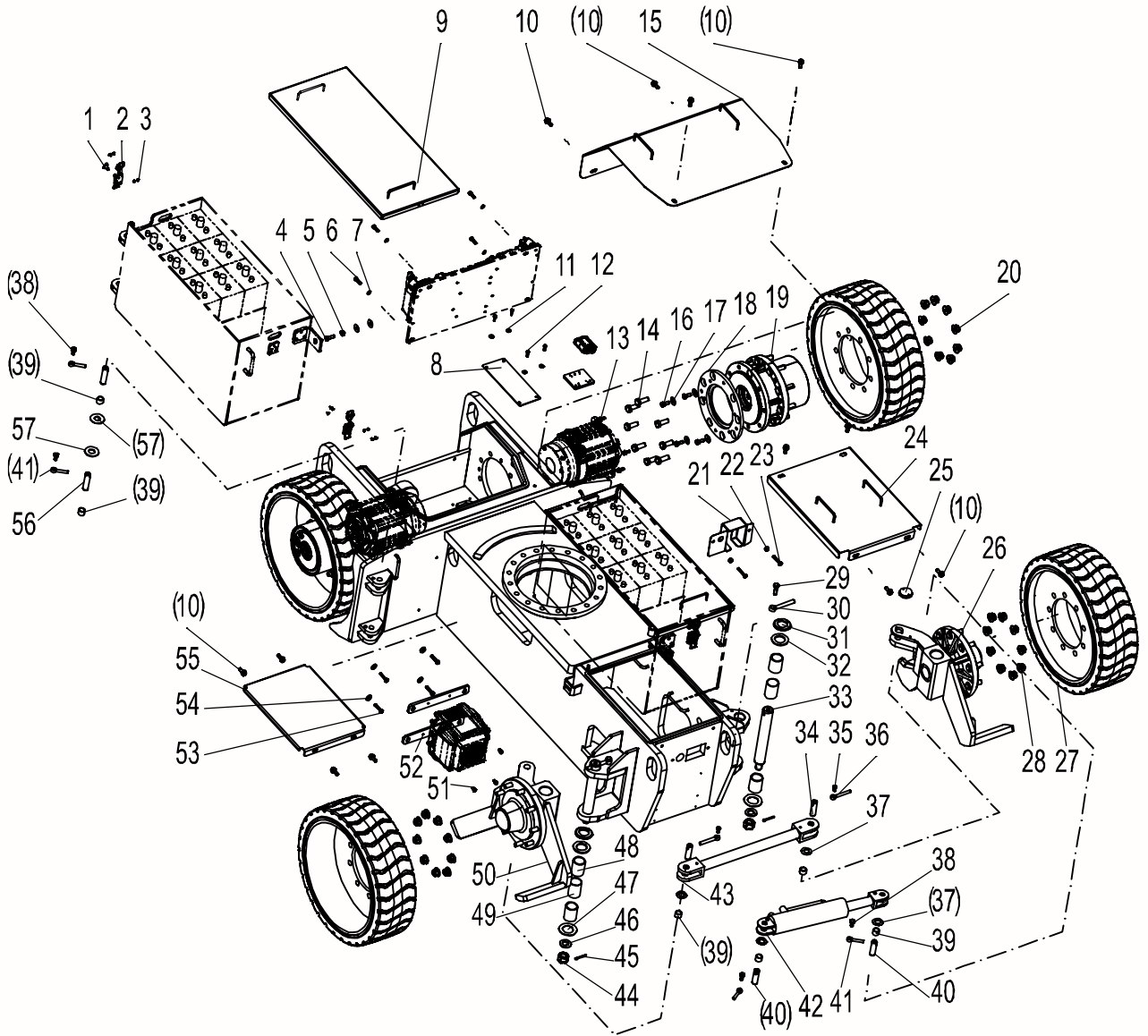
ZOOMLION

Parts Manual

Section 4 Chassis



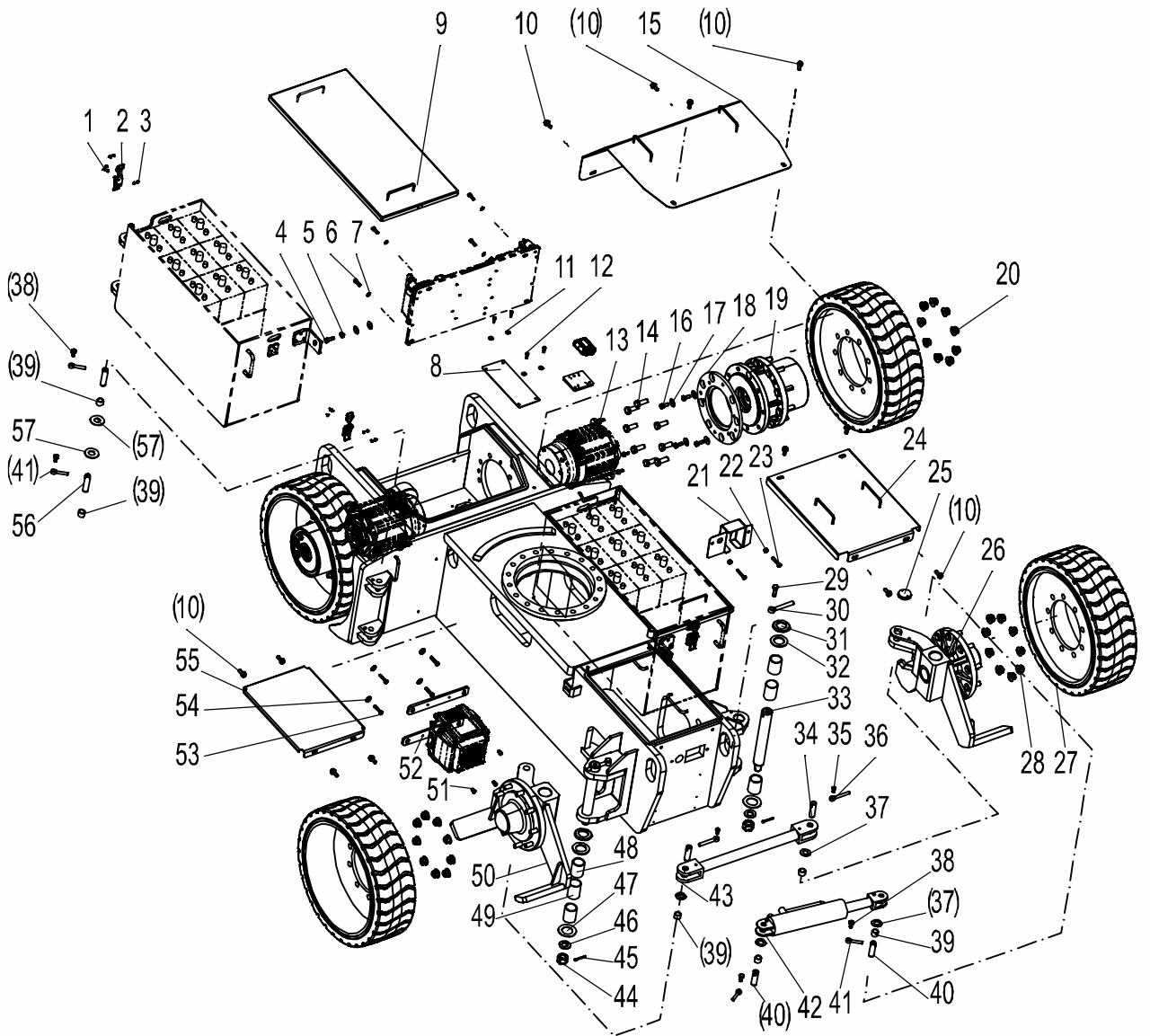
Chassis 0077320280000000



Chassis 0077320280000000

NO.	Material No.	Item and Spec	Qty	Remark
1	1040102429	Screw M4×8	20	
2	1101000180	Lock	4	
3	1040201772	Nut M4-A2-70	8	GB/T6170-2000
4	1040004565	Bolt M10×30-8.8-DKL	2	GB/T5783-2016
5	1040200113	Nut M10-8	2	GB/T6170-2000
6	1040103112	Screw M8×25-8.8	4	GB/T70.1-2000
7	1040301515	Washer 8-200HV	12	GB/T97.1-2002
8	00773202800001031	Back box cover	2	
9	00773202802600000	Battery box cover	2	
10	1040005831	Bolt M10×25-DKL	12	GB/T5789-1986
11	1040300735	Washer 6-200HV	8	GB/T96.1-2002
12	1040001631	Bolt M6×20-A2-70	8	GB/T5783-2000
13	1040100886	Screw M8×20-8.8	8	GB/T70.1-2008
14	1040006550	Bolt M16×40-10.9	16	GB/T5783-2000
15	00773202802400000	Back cover of chassis	1	
16	1040002434	Bolt M10×25-8.8	8	GB/T5783-2000
17	1040302512	Washer 10-200HV	12	GB/T96.1-2002
18	00773202800001070	Motor installation plate	2	
19	1030202594	Travel reducer	2	
20	1040202297	Nut M16×1.5-10 (Spiralock)	18	GB/T6177.2-2000
21	00773402820001090	Charger port protective box	1	
22	1040200503	Nut M8-8	2	GB/T889.1-2000
23	1040004521	Bolt M8×45-8.8	2	GB/T5783-2000
24	00773202802200000	Front cover of chassis	1	
25	00773402820001061	Angle sensor protective hood	1	
26	00773202800800001	Hub assembly of left steering knuckle	1	
27	1030800871	Tire	4	ML22×7-20200814LT
28	1040202296	Nut 5/8-18UNF-10(Spiralock)	18	ANSI B18.2.2-2015
29	1040002439	Bolt M12×40-8.8	2	GB/T5783-2000
30	00773400200001070	Stop pin	2	
31	00773202800400000	Frame welds	1	
32	00773202800001040	Steering knuckle gasket II	2	

Chassis 0077320280000000



Chassis 0077320280000000

NO.	Material No.	Item and Spec	Qty	Remark
33	00773402820001070	Steering knuckle main pin	2	
34	00773202800001120	Steering pin II	1	
35	1040004517	Bolt M8×16-8.8	2	GB/T5783-2000
36	00773400300001200	Stop pin	2	
37	00773402820001030	Steering pull rod gasket	4	
38	1040002433	Bolt M10×20-8.8	6	GB/T5783-2000
39	00773402800001260	Bearing	8	
40	00773202800001100	Steering pin	3	
41	00775802800001250	Stop pin	6	
42	00773202801800000	Cylinder	1	
43	00773202801400000	Steering linkage	1	
44	1040202280	Nut M24-05-DKL	2	GB/T6181-1986
45	1040500394	Cotter pin	2	GB/T91-2000
46	1040301511	Washer 24-200HV	2	GB/T97.1-2002
47	00773202800001051	Steering knuckle gasket I	2	
48	00773402820001110	Bearing	4	
49	00773202800001060	Spacer bush	2	
50	00773202800600001	Hub assembly of right steering knuckle	1	
51	1040103110	Screw M8×10-8.8	4	GB/T70.1-2000
52	00773202800001130	Charger installation plate	2	
53	1040002458	Bolt M8×40-8.8	4	GB/T5783-2000
54	1040302480	Washer 8-200HV	4	GB/T96.1-2002
55	00773202800001020	Pipeline tray	1	
56	00773202800001090	Battery box pin	4	
57	00773202800001080	Battery box pad	4	
58	1089900652	Sealing strip	1	
59	204060296	Great wall vehicle gear oil	1	

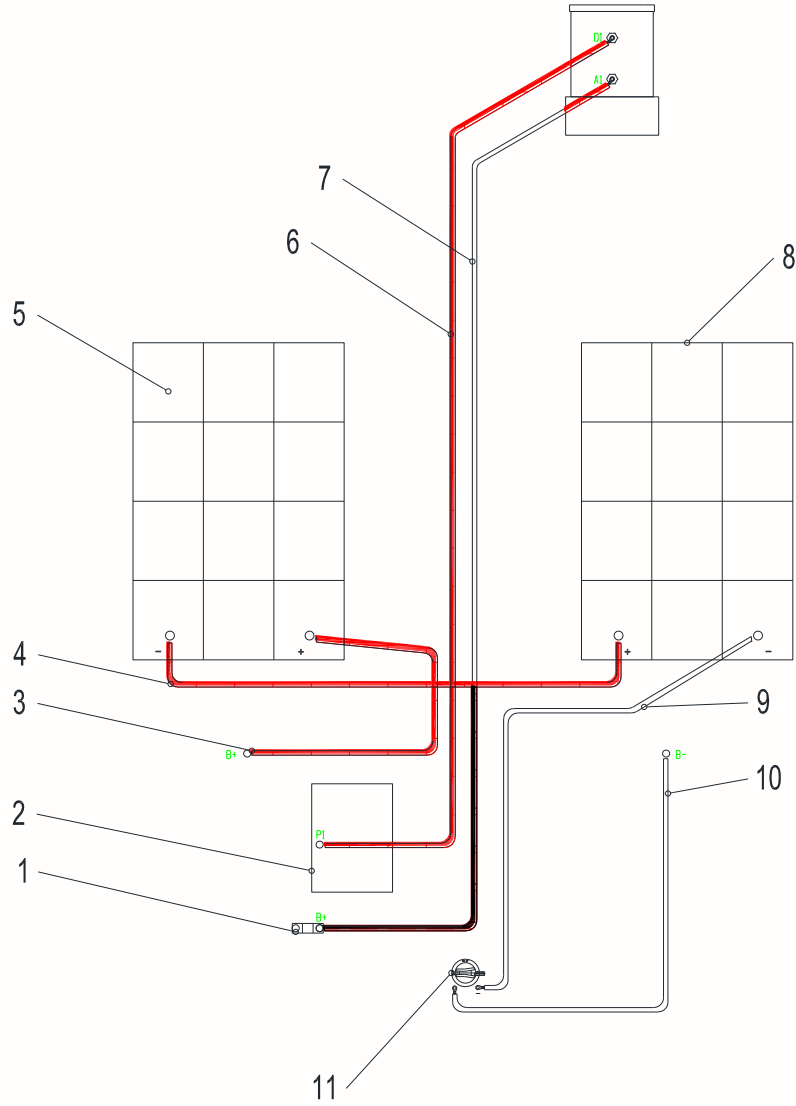
ZOOMLION

Parts Manual

Section 5 Power System



Power Line 00773206200230050



Power Line 00773206200230050

No.	Material No.	Item and Spec	Qty	Remark
1	/	Fuse	1	
2	1020202207	Driver assembly	1	
3	00773206200234020	Connect the positive electrode of the battery to the group plate B+	1	
4	00773206200234010	Battery series circuit	1	
5	1020999057	Battery	1	
6	00773206200234060	Function pump insurance and function pump A1 connection	1	
7	00773206200234050	Connect the left driver P- and function pump D1	1	
8	1020999056	Battery	1	
9	00773206200234030	Connect the negative pole of the battery to the manual switch	1	
10	00773206200234040	Manual switch and group plate B-line	1	
11	1029900667	Main power switch	1	

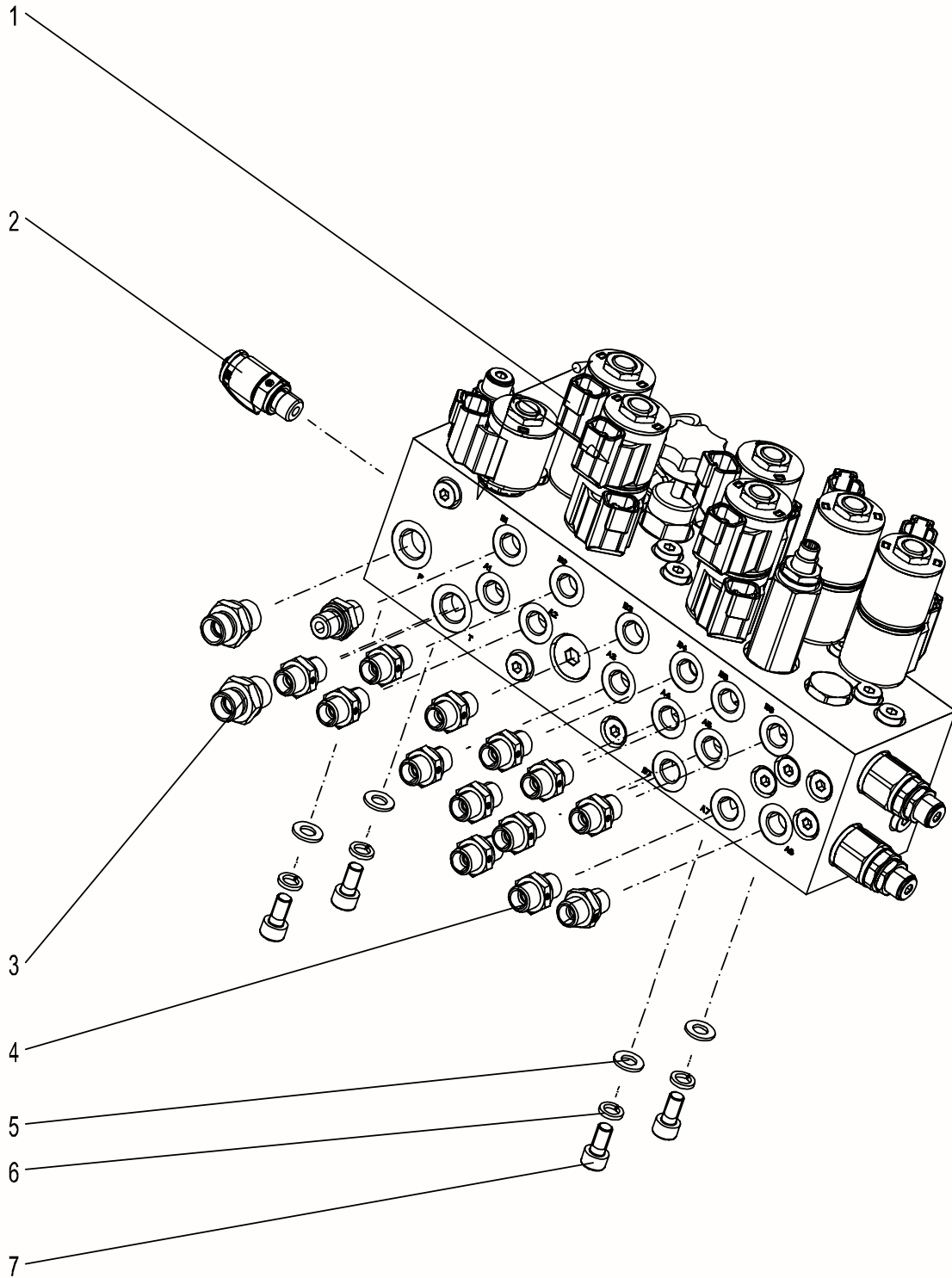
ZOOMLION

Parts Manual

Section 6 Hydraulic System



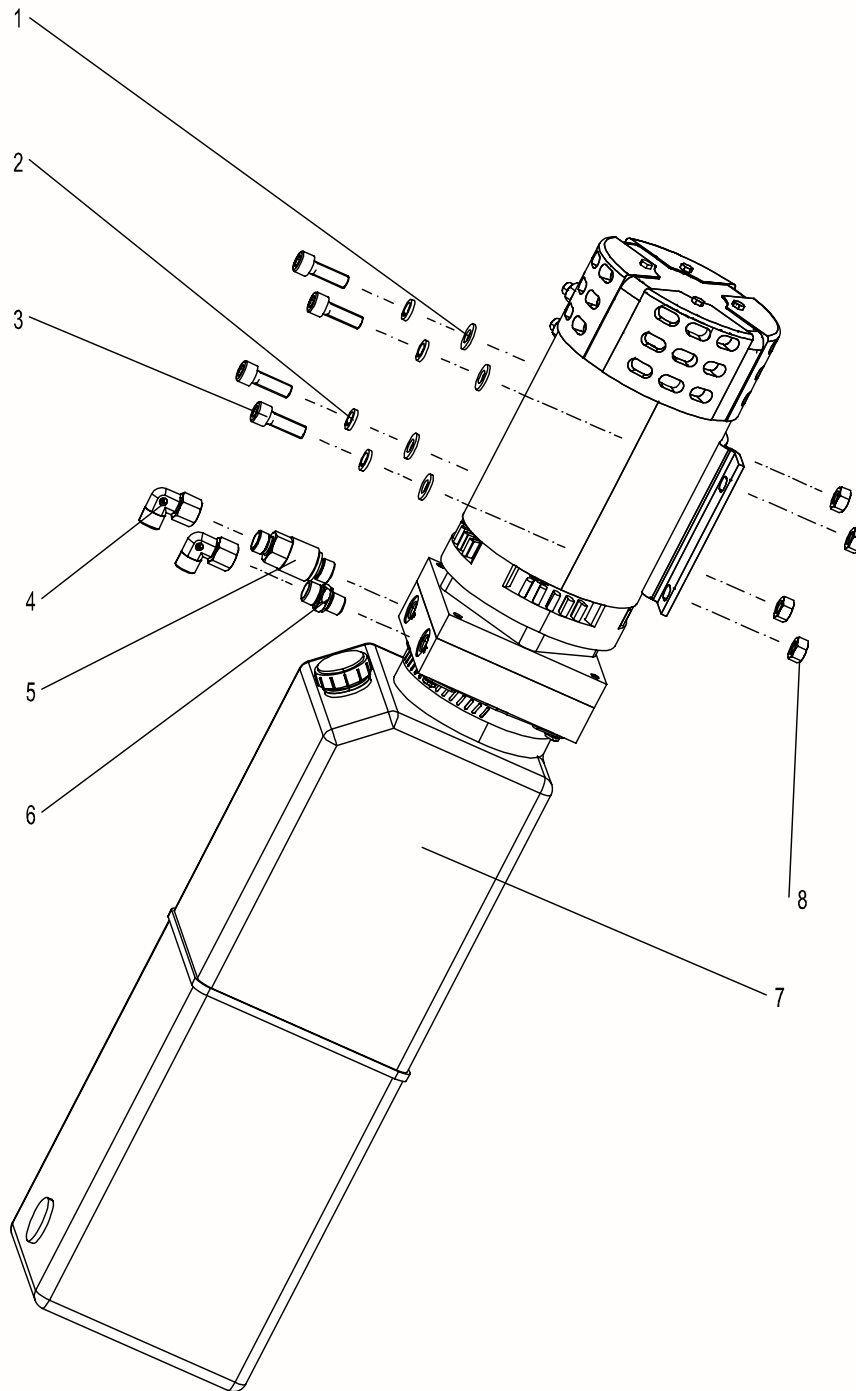
Main valve Assembly of Turntable 00773205201800000



Main valve Assembly of Turntable 00773205201800000

NO.	Material No.	Item and Spec	Qty	Remark
1	1010307852	Main valve assembly	1	
2	1140114187	Test joint	1	
3	1140114040	Non return joint	2	
4	1140111237	Non return joint	14	
5	1040301515	Washer 8-200HV	4	GB/T97.1-2002
6	1040301510	Washer 8	4	GB/T93-1987
7	1040103111	Screw M8×16-8.8	4	GB/T70.1-2000

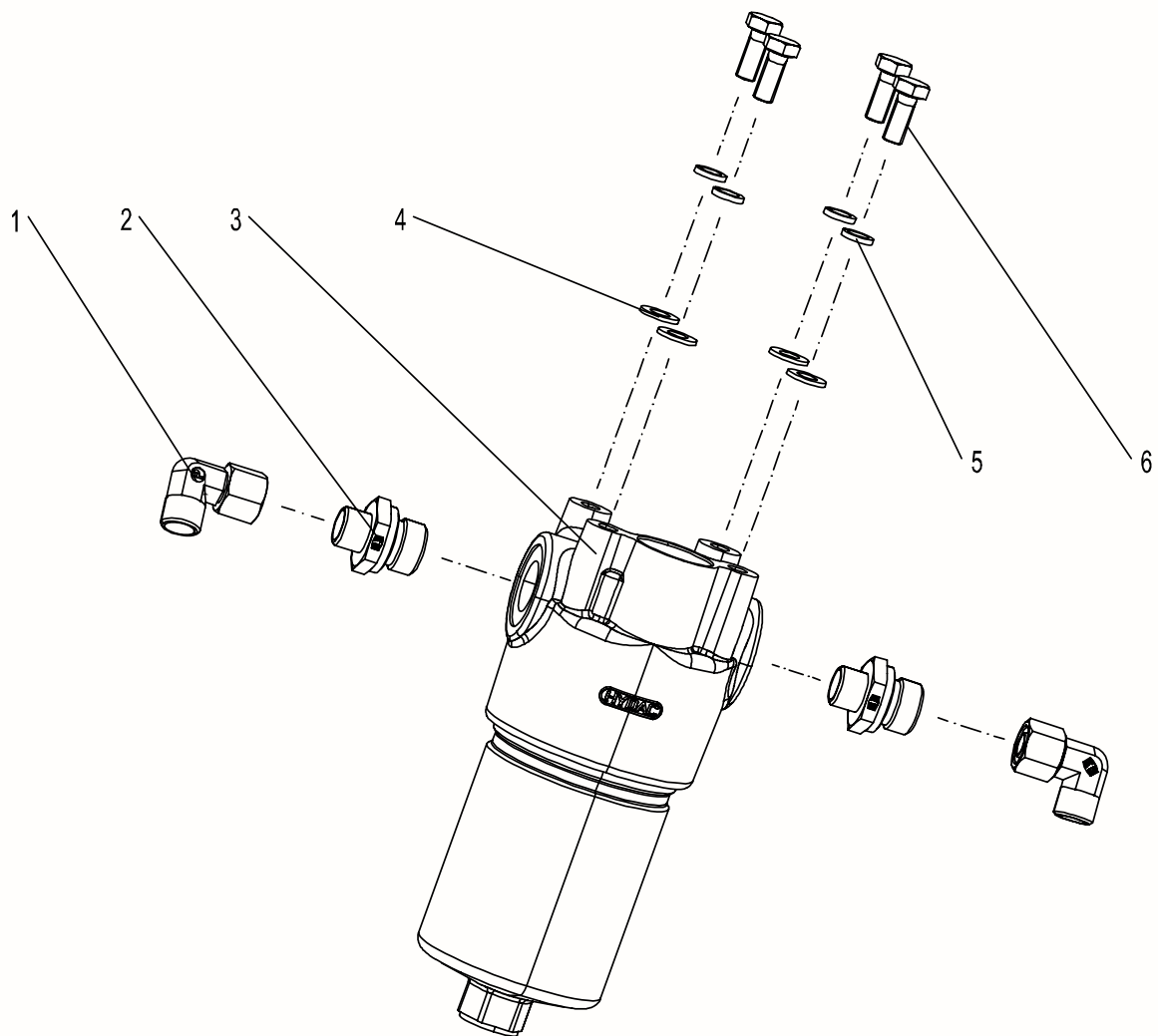
Power Unit Assembly of Turntable 0077320520180000



Power Unit Assembly of Turntable 00773205201800000

NO.	Material No.	Item and Spec	Qty	Remark
1	1040302489	Washer 10-200HV	4	GB/T97.1-2002
2	1040301502	Washer 10	4	GB/T93-1987
3	1040101995	Screw	4	GB/T70.1-2000
4	1140101476	Tube to swivel M10×30-8.8	2	
5	1140115524	Long non return joint	1	
6	1140101461	Non return joint	1	
7	1019901763	Power unit	1	
8	1040200113	Nut M10-8	4	GB/T6170-2000

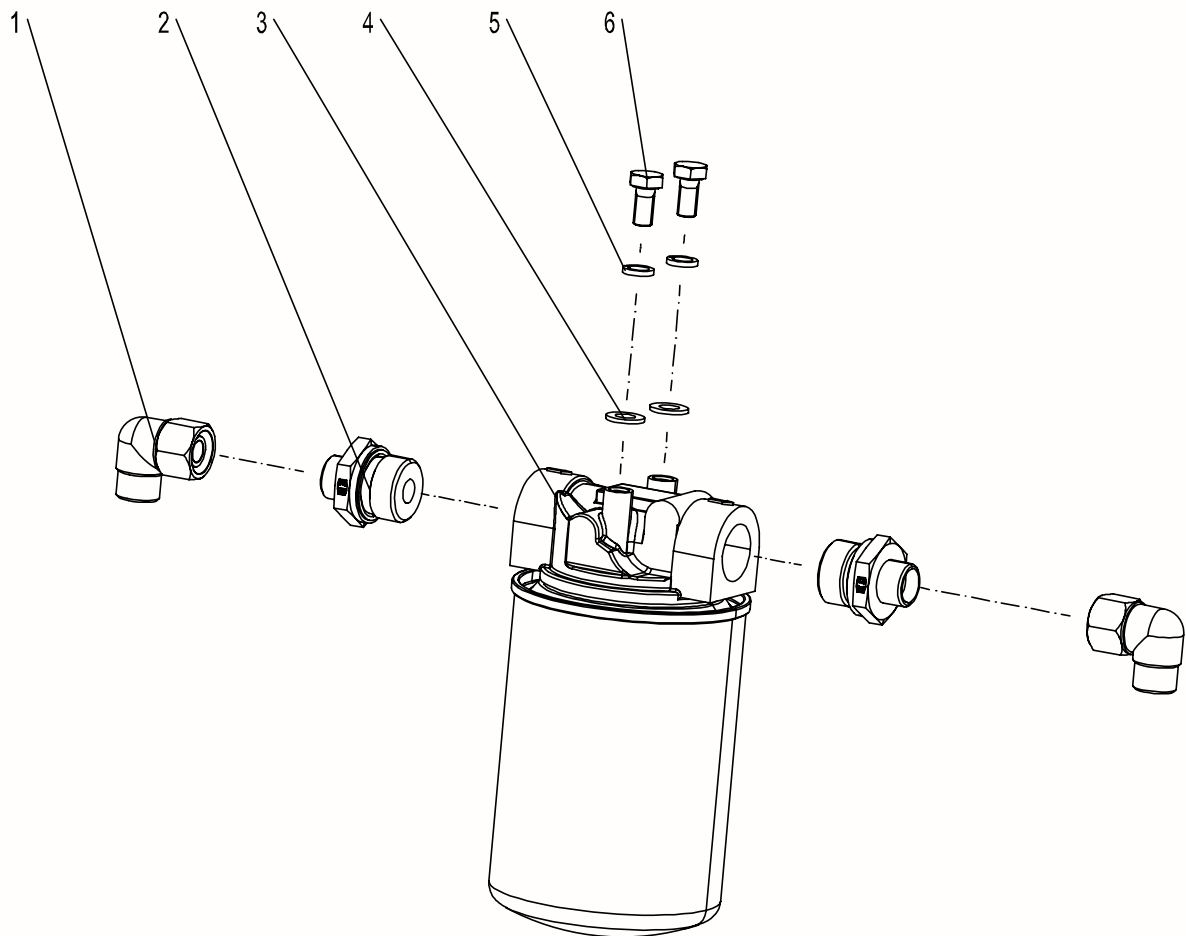
High Pressure Filter installation of Turntable 00773205201800000



High Pressure Filter installation of Turntable 00773205201800000

NO.	Material No.	Item and Spec	Qty	Remark
1	1140101463	Tube to swivel	2	
2	1140109052	Non return joint	2	
3	1010601138	High pressure filter	4	
4	1040301515	Washer 8-200HV	4	GB/T97.1-2002
5	1040301510	Washer 8	4	GB/T93-1987
6	1040004518	Screw M8×20-8.8	4	GB/T5783-2000

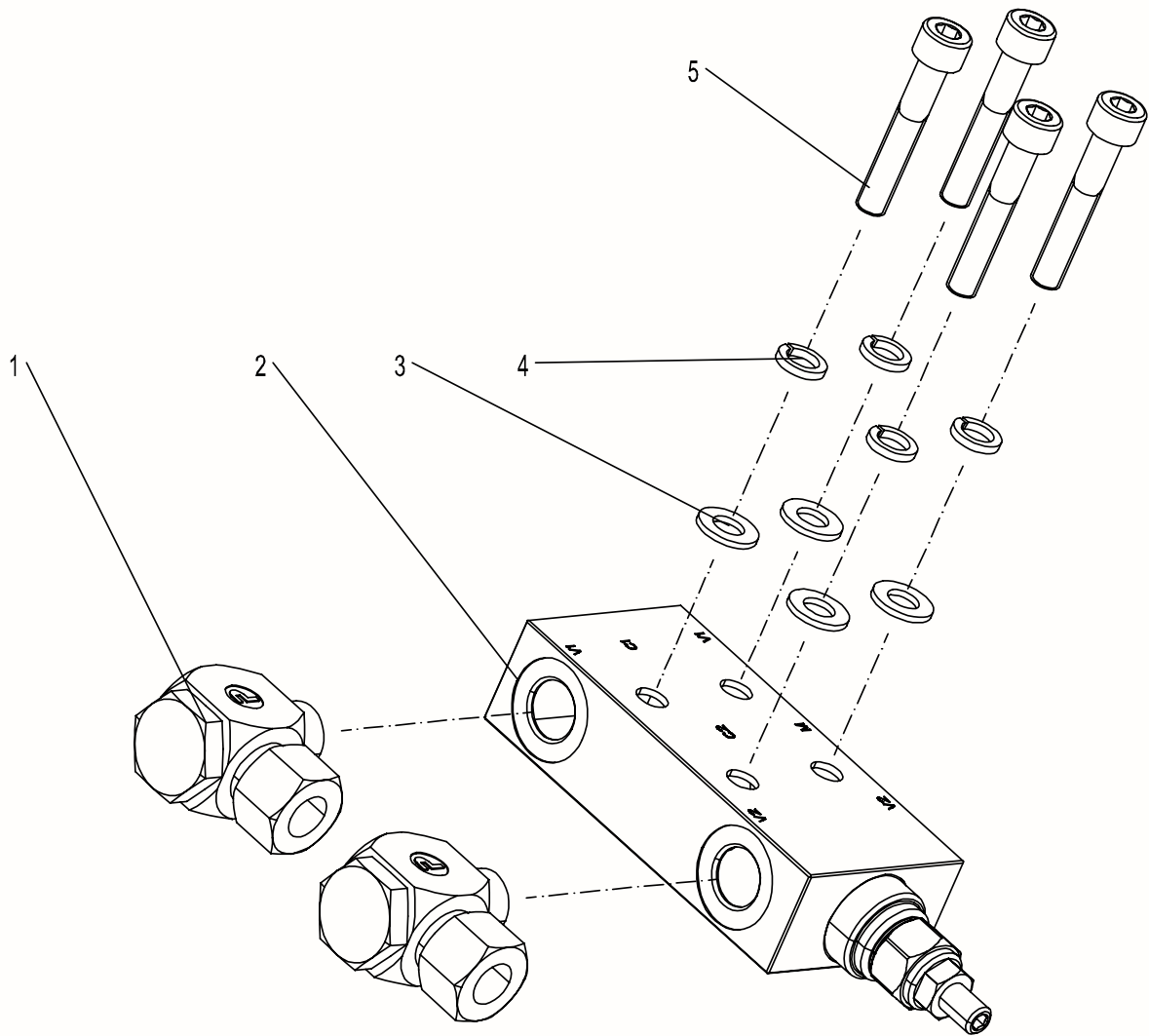
Low Pressure Filter Installation of Turntable 00773205201800000



Low Pressure Filter Installation of Turntable 00773205201800000

NO.	Material No.	Item and Spec	Qty	Remark
1	1140101477	Tube to swivel	2	
2	1140207362	Non return joint	2	
3	1010601138	High pressure filter	4	
4	1040301515	Washer 8-200HV	4	GB/T97.1-2002
5	1040301510	Washer 8	4	GB/T93-1987
6	1040004517	Screw M8×16-8.8	4	GB/T5783-2000

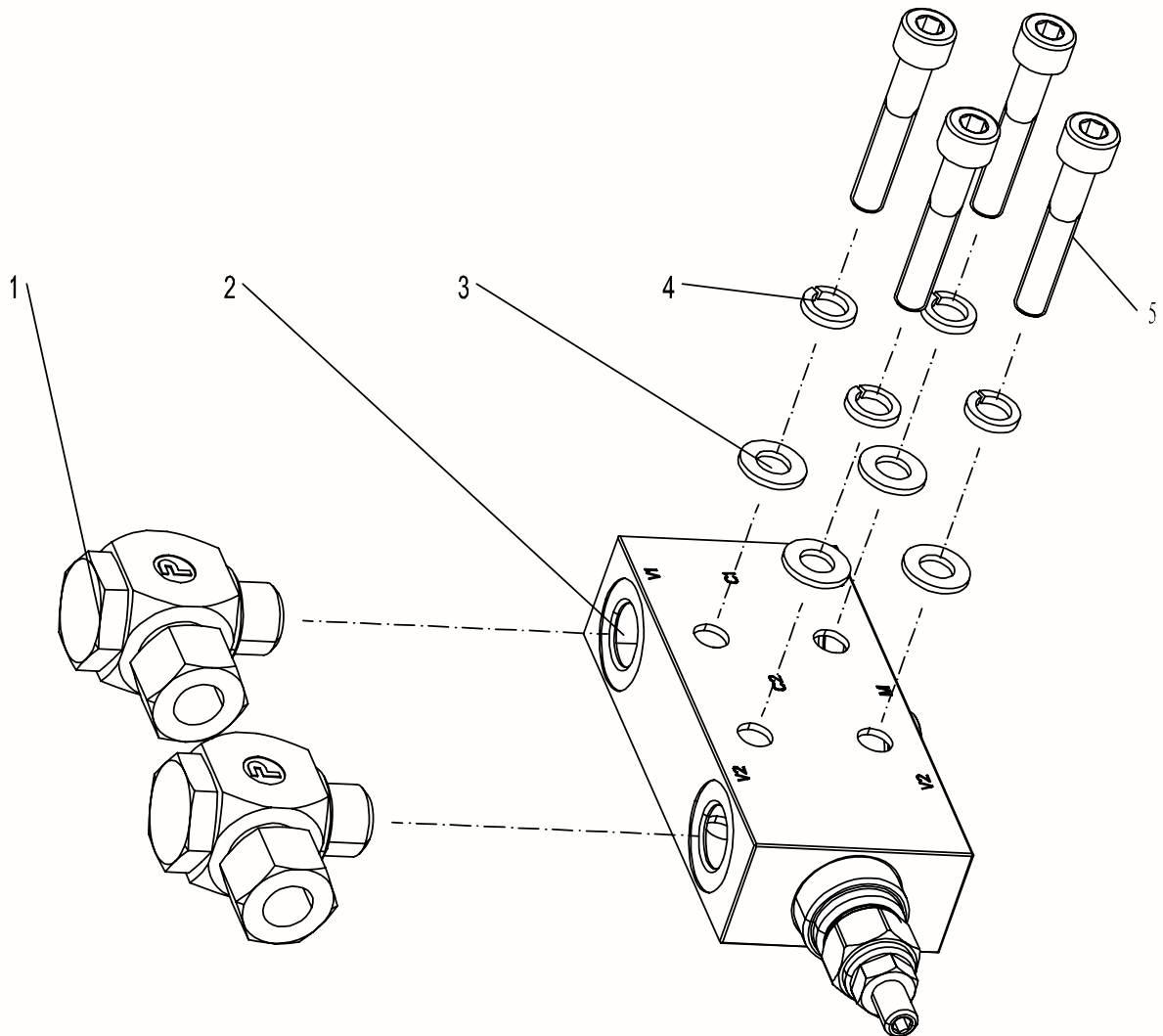
Main Boom Lifting Balance Valve Installation 00773205201000000



Main Boom Lifting Balance Valve Installation 00773205201000000

NO.	Material No.	Item and Spec	Qty	Remark
1	1040103114	Screw M8×45-8.8	4	GB/T70.1-2000
2	1040301510	Washer	4	GB/T93-1987
3	1040301515	Washer 8-200HV	4	GB/T97.1-2002
4	1010306020	Balance valve	1	
5	1011200193	High pressure articulating joint	2	

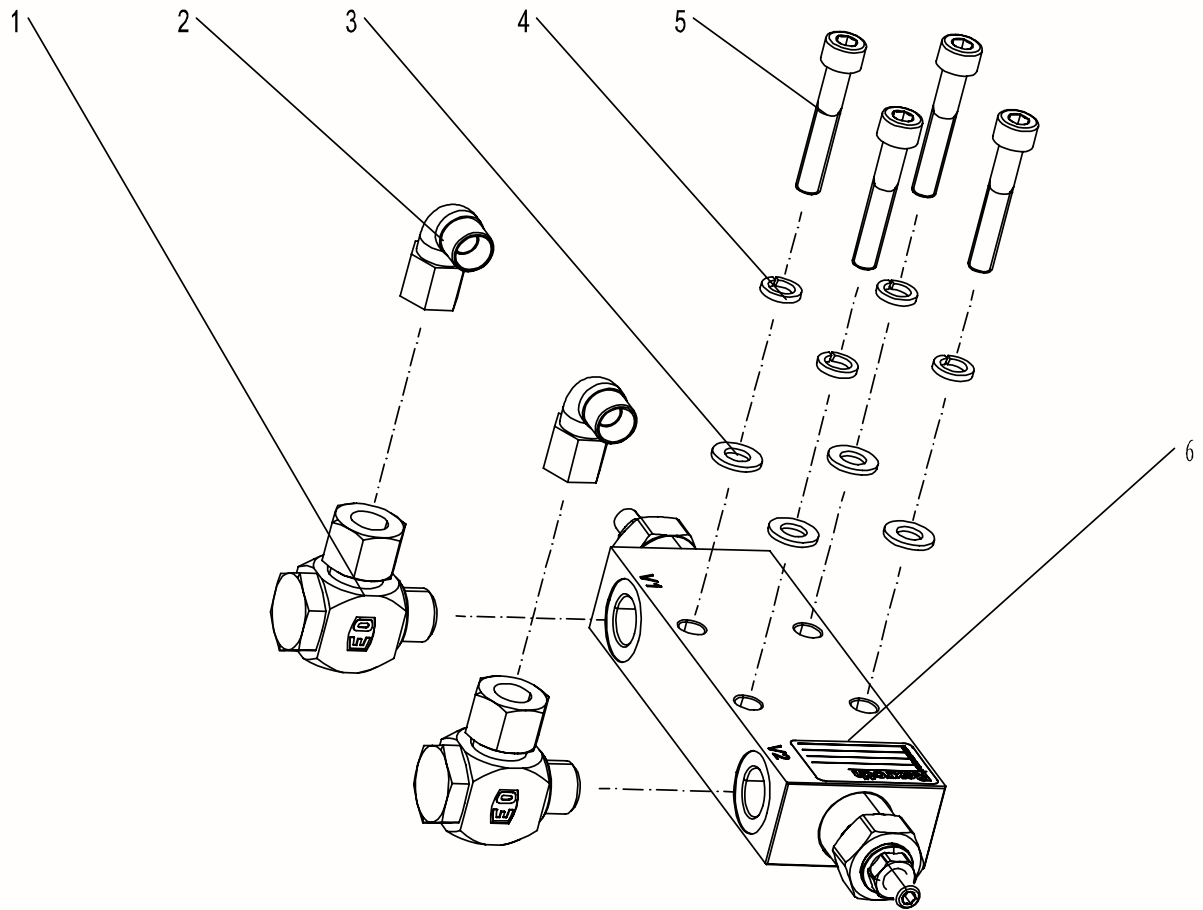
Tower Boom Balance Valve Assembly 00773205200600000



Tower Boom Balance Valve Assembly 00773205200600000

NO.	Material No.	Item and Spec	Qty	Remark
1	1011200193	High pressure articulating joint	2	
2	1010305591	Balance valve	1	
3	1040301515	Washer 8-200HV	4	GB/T97.1-2002
4	1040301510	Washer 8	4	GB/T93-1987
5	1040103114	Screw M8×45-8.8	4	GB/T70.1-2000

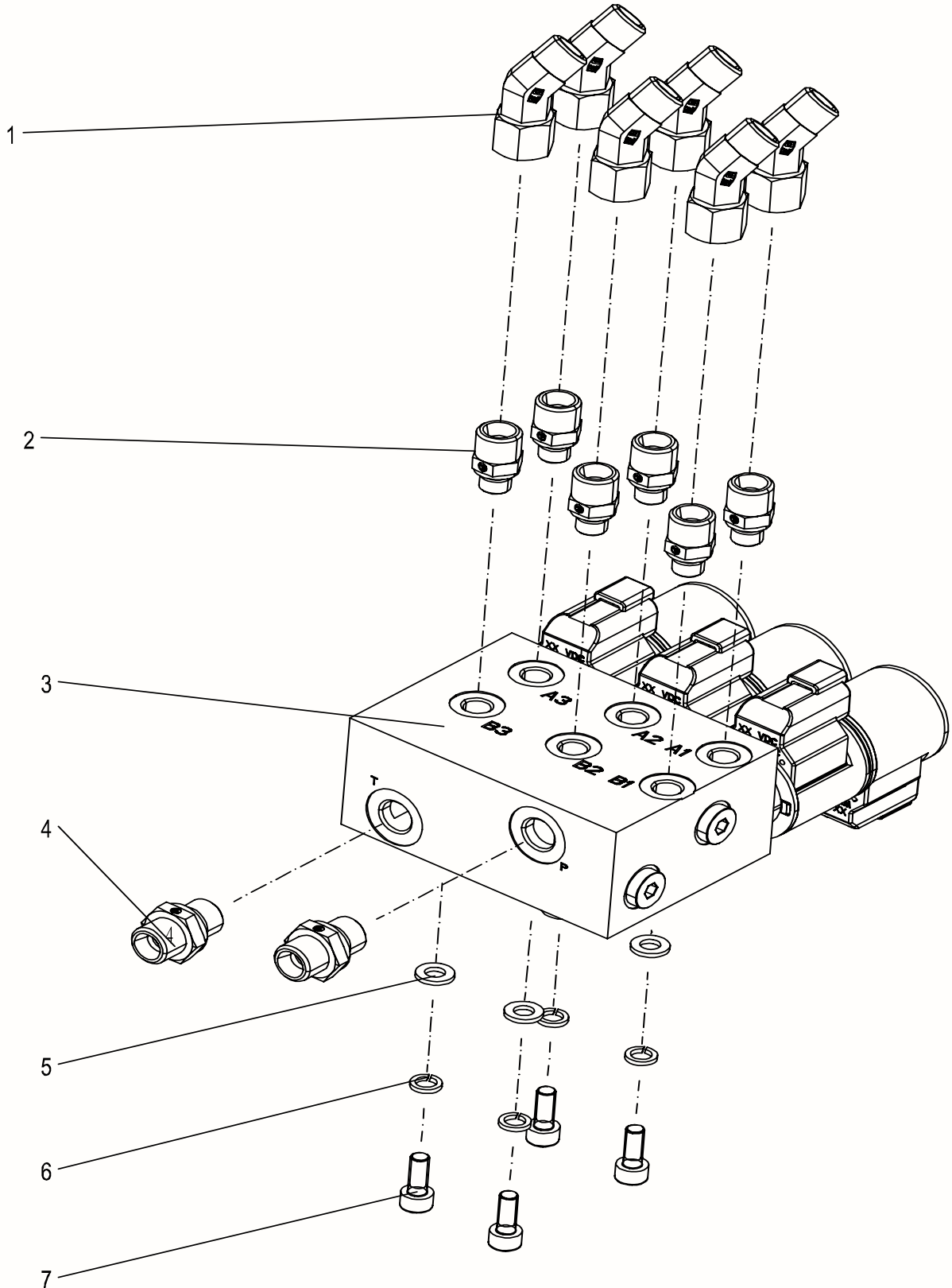
Main Boom Telescopic Balance Valve Installation 00773205200800000



Main Boom Telescopic Balance Valve Installation 00773205200800000

NO.	Material No.	Item and Spec	Qty	Remark
1	1011200193	High pressure articulating joint	2	
2	1140101475	Tube to swivel	2	
3	1040301515	Washer 8-200HV	4	GB/T97.1-2002
4	1040301510	Washer 8	4	GB/T93-1987
5	1040103114	Screw M8×45-8.8	4	GB/T70.1-2000
6	1010306020	Balance valve	1	

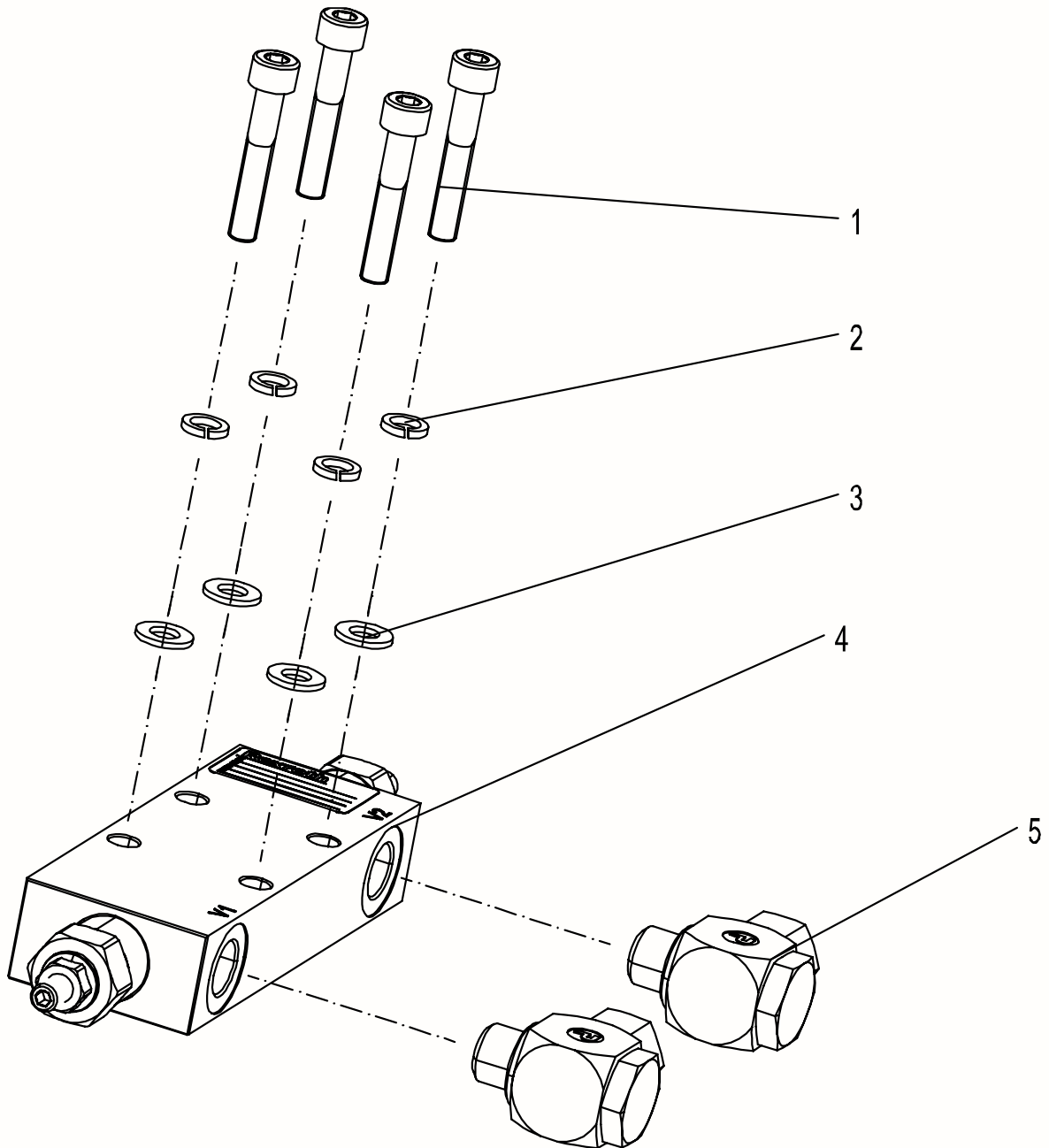
Main Boom Platform Valve Installation 00773205200800000



Main Boom Platform Valve Installation 00773205200800000

NO.	Material No.	Item and Spec	Qty	Remark
1	1140107801	45° combined elbow	6	
2	1140103357	Non return joint	6	
3	1010307853	Platform control valve	1	
4	1140111237	Non return joint	2	
5	1040300051	Washer 6-200HV	4	GB/T97.1-2002
6	1040300062	Washer 6	4	GB/T93-1987
7	1040301510	Screw M6×15-8.8	4	GB/T70.1-2000

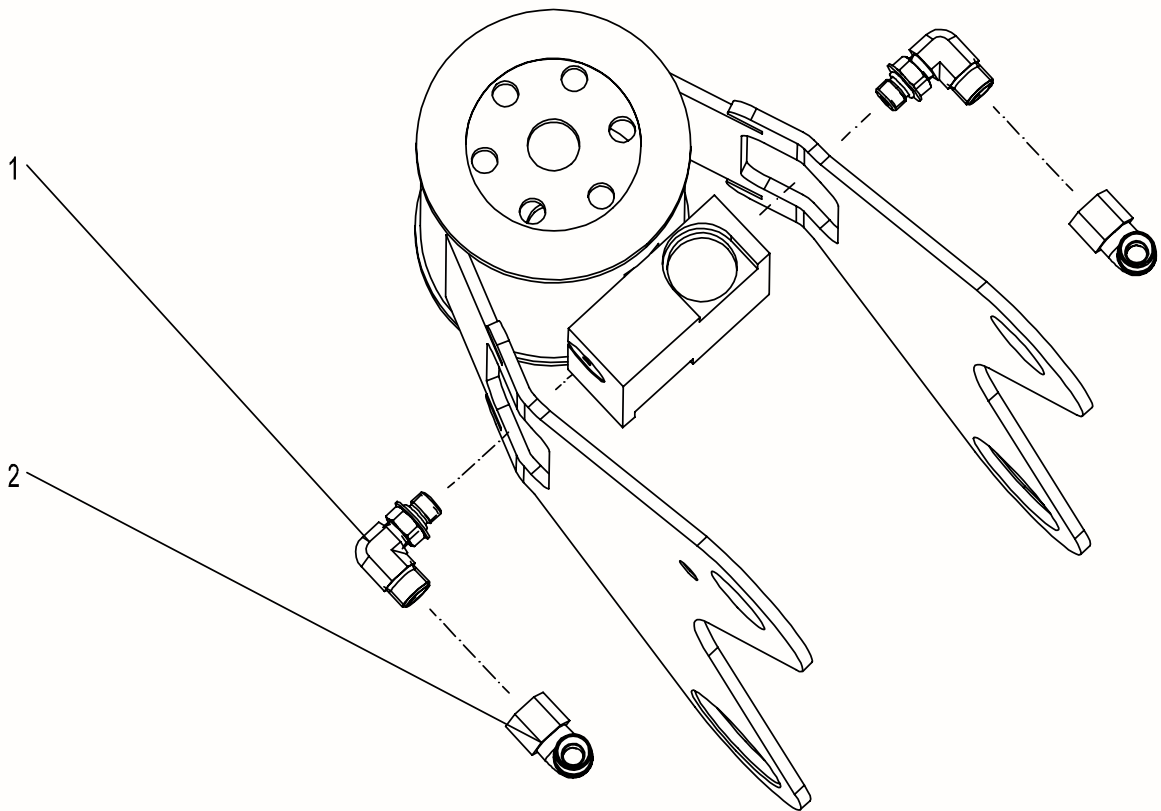
Jib Lifting Balance Valve Assembly 0077320520100000



Jib Lifting Balance Valve Assembly 00773205201000000

NO.	Material No.	Item and Spec	Qty	Remark
1	1040103114	Screw M8×45-8.8	4	GB/T70.1-2000
2	1040301510	Washer 8	4	GB/T93-1987
3	1040301515	Washer 8-200HV	4	GB/T97.1-2002
4	1010306020	Balance valve	1	
5	1011200193	High pressure articulating joint	2	

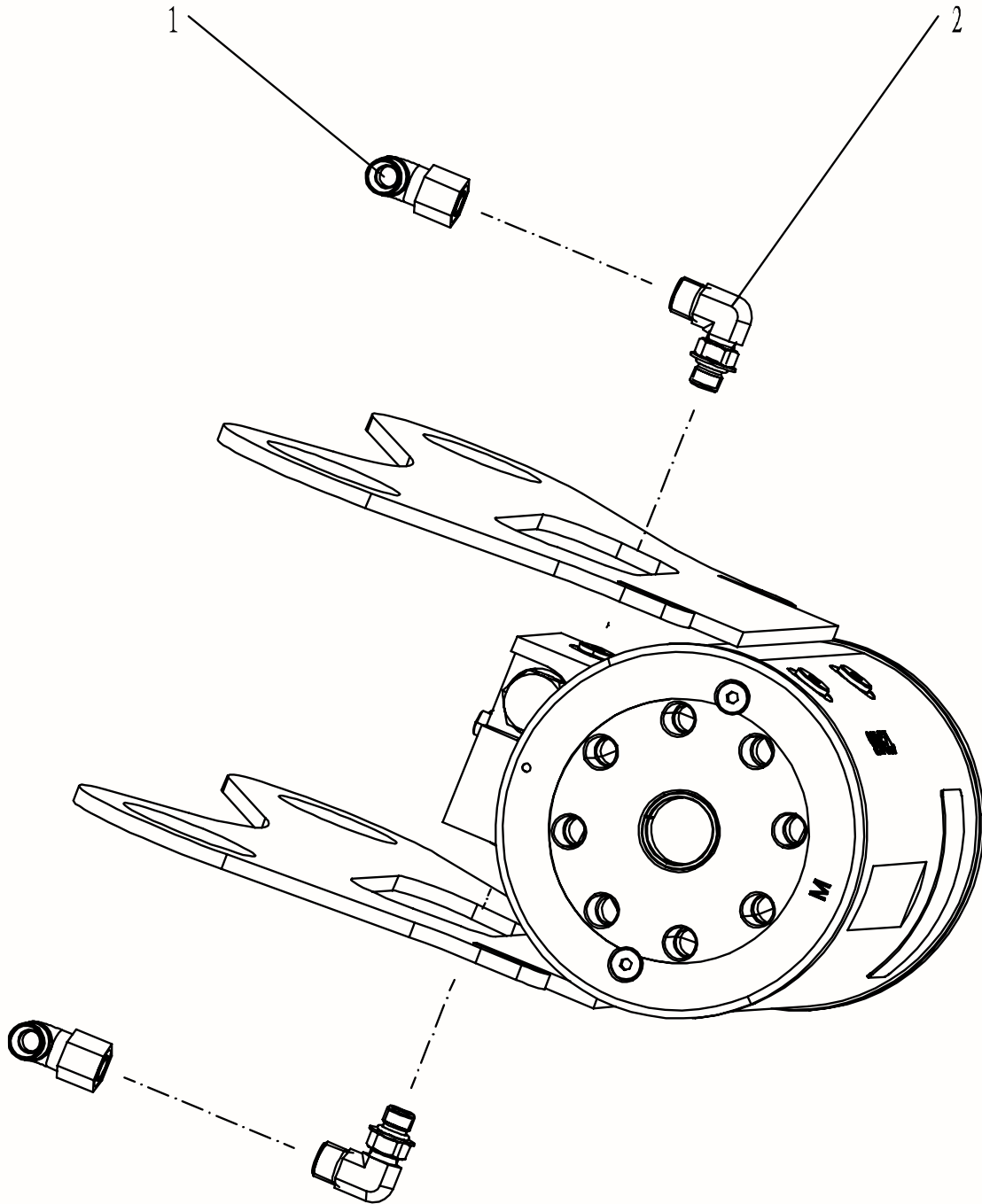
Platform Rotary Actuator Joint Assembly 00773205201200000



Platform Rotary Actuator Joint Assembly 00773205201200000

NO.	Material No.	Item and Spec	Qty	Remark
1	1140107691	Non return adjustable joint	2	
2	1140101475	Tube to swivel	2	

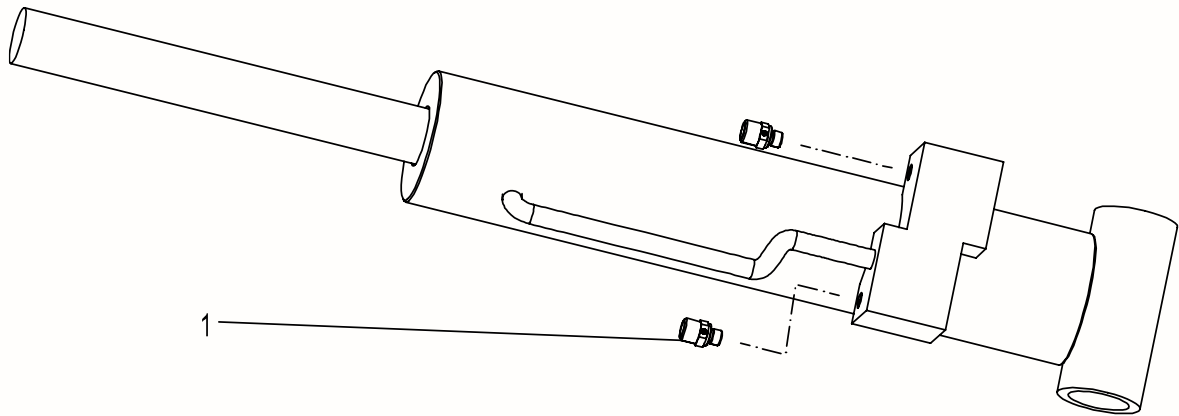
Jib Rotary Actuator Joint Assembly 00773205201200000



Jib Rotary Actuator Joint Assembly 00773205201200000

NO.	Material No.	Item and Spec	Qty	Remark
1	1140101475	Tube to swivel	2	
2	1140107691	Non return adjustable joint	2	

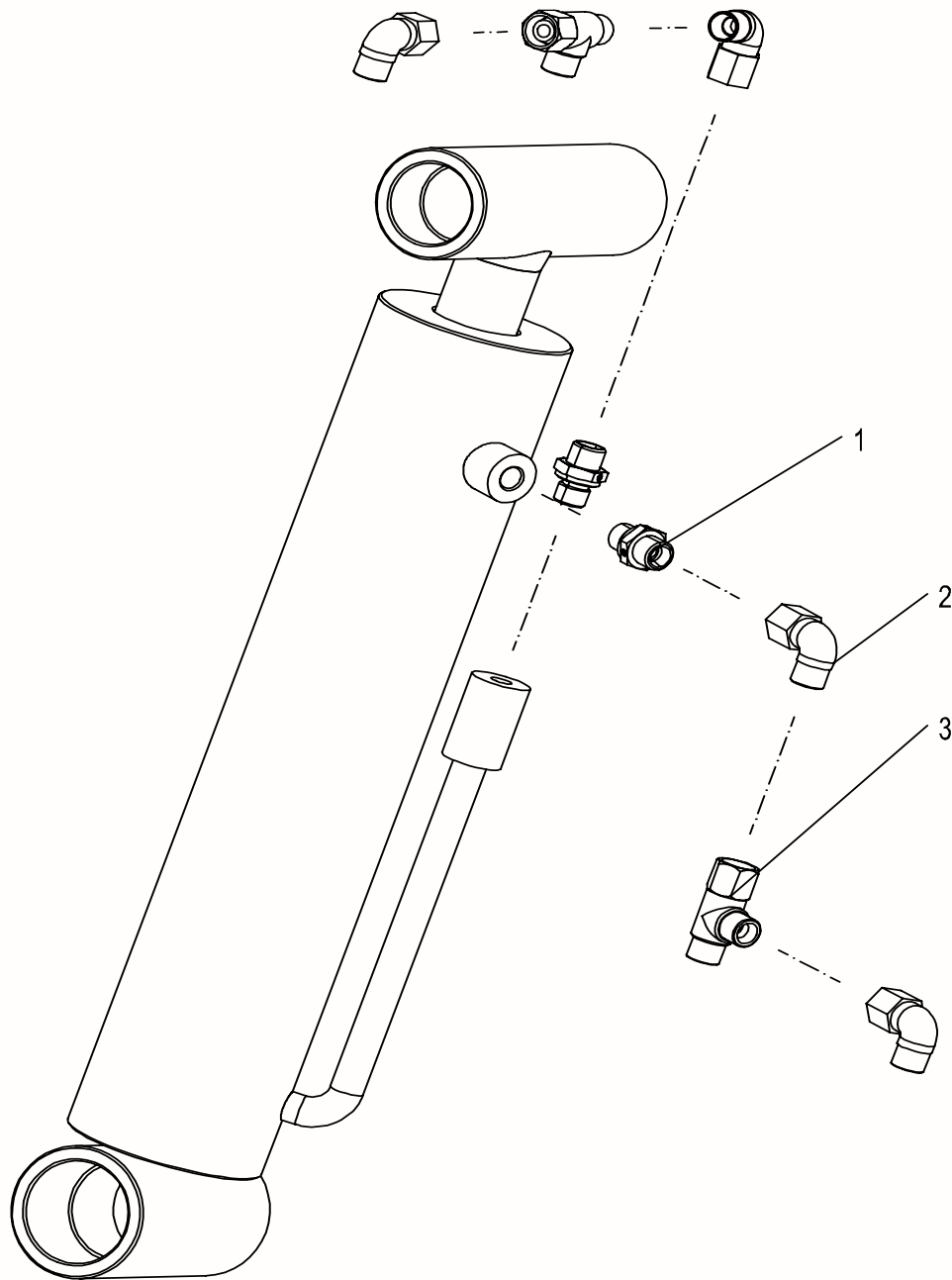
Upper Leveling Cylinder Joint Assembly 00773205201200000



Upper Leveling Cylinder Joint Assembly 00773205201200000

NO.	Material No.	Item and Spec	Qty	Remark
1	1140103357	Non return joint	2	

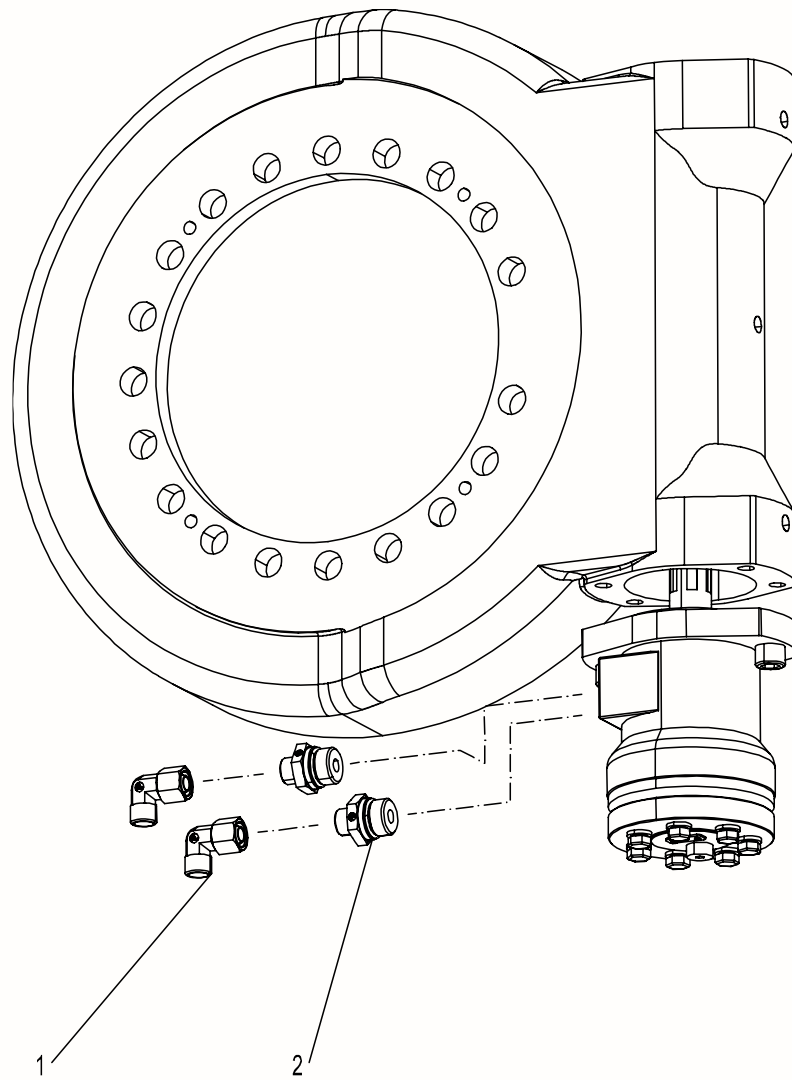
Lower Leveling Cylinder Joint Assembly 00773205201200000



Lower Leveling Cylinder Joint Assembly 00773205201200000

NO.	Material No.	Item and Spec	Qty	Remark
1	1140111237	Non return joint	2	
2	1140101475	Tube to swivel	4	
3	1140102959	Tube to swivel	2	

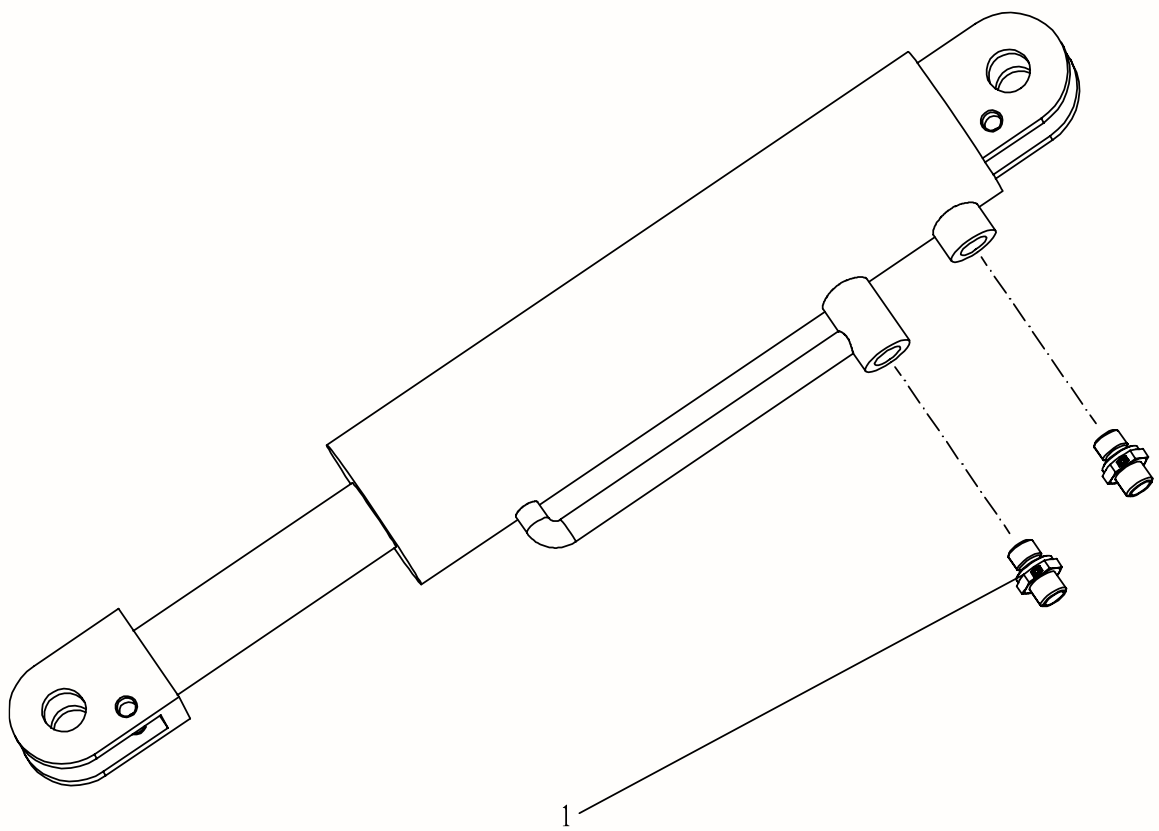
Rotary Motor Joint Assembly 00773205201200000



Rotary Motor Joint Assembly 00773205201200000

NO.	Material No.	Item and Spec	Qty	Remark
1	1140112823	Non return joint	2	
2	1140101476	Tube to swivel	2	

Steering Cylinder Joint Assembly 00773205201600000



Steering Cylinder Joint Assembly 00773205201600000

NO.	Material No.	Item and Spec	Qty	Remark
1	1140111237	Non return joint	2	

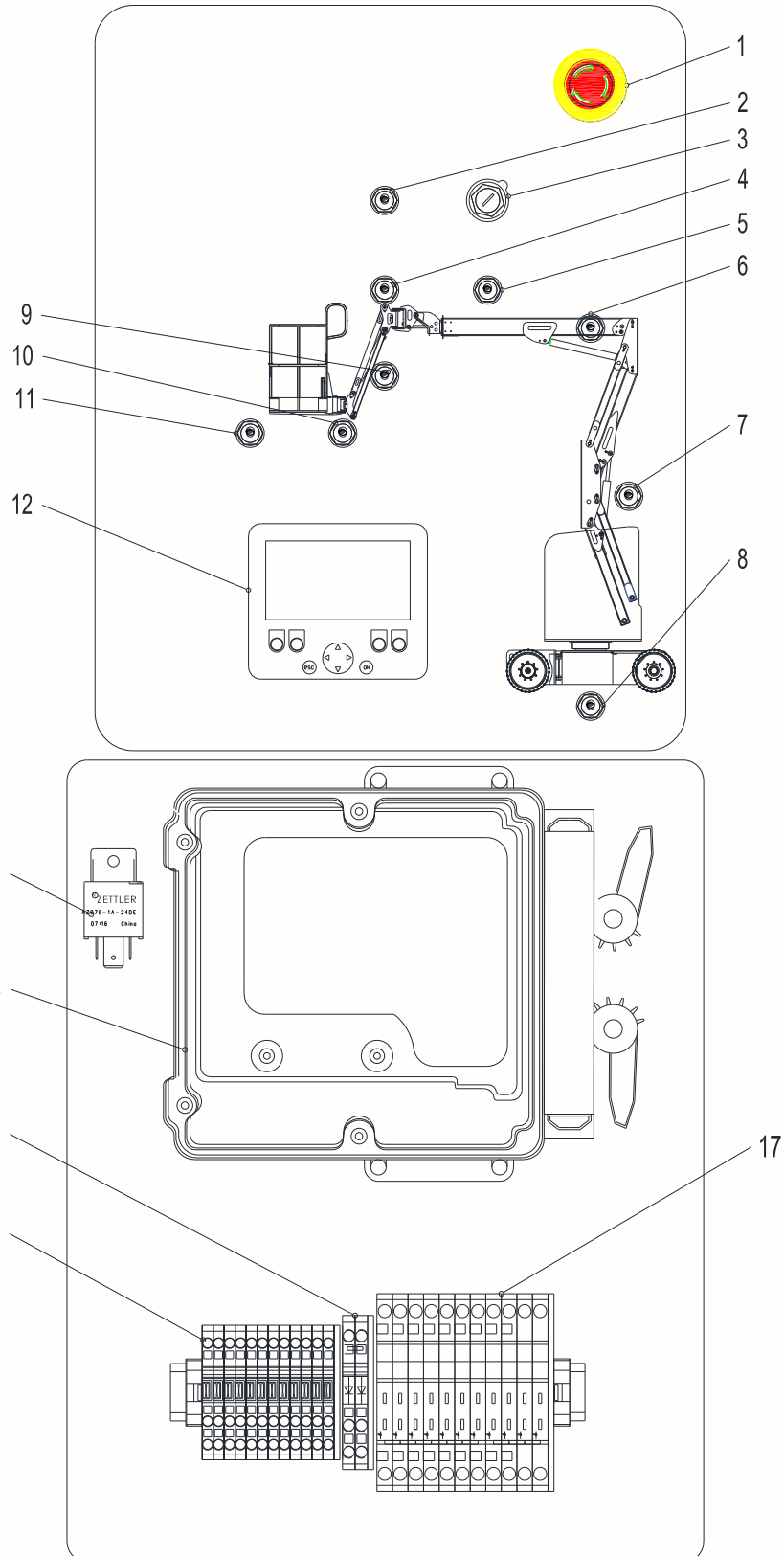
ZOOMLION

Parts Manual

Section 7 Electrical System



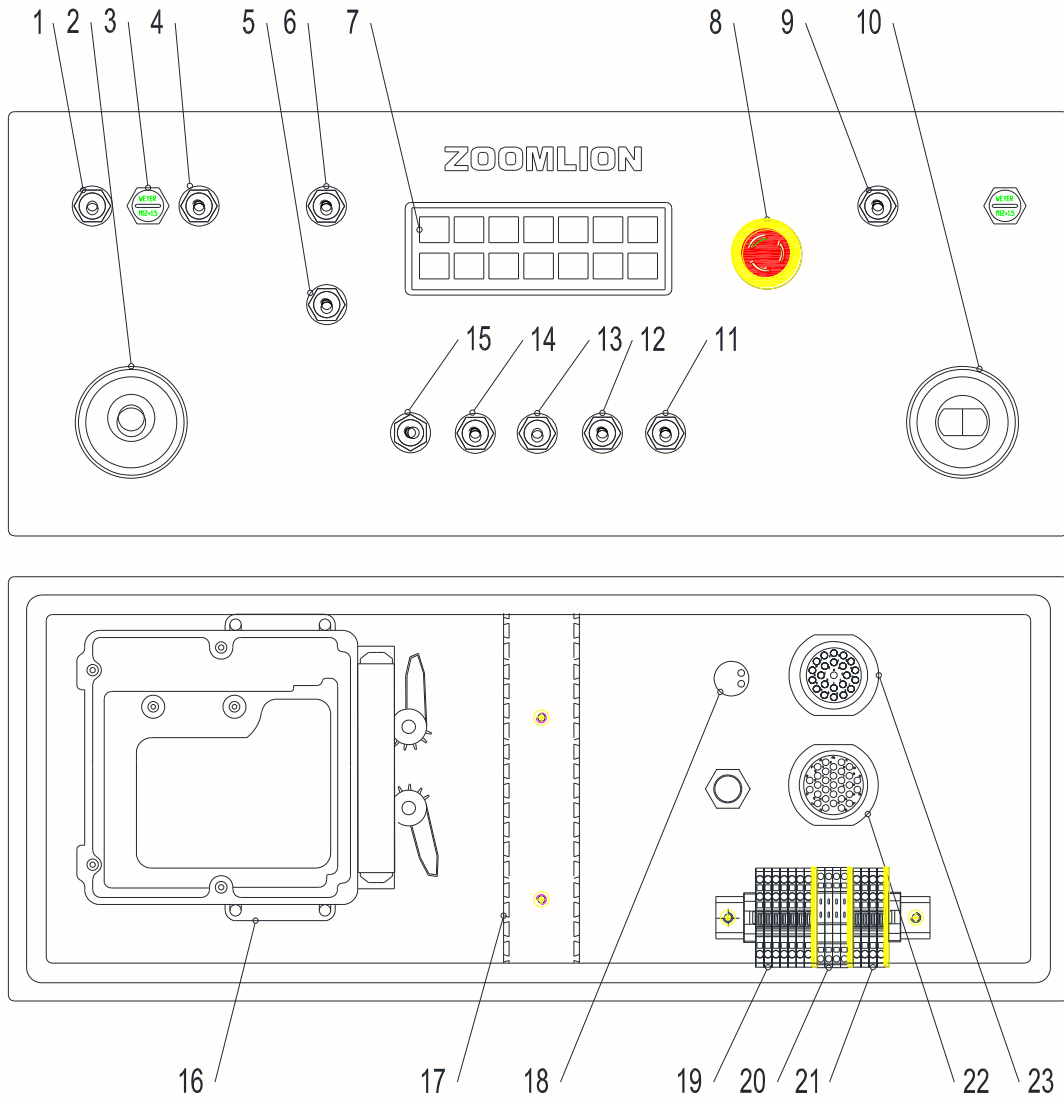
Turntable Electrical Control Box Assembly 00773206200220000



Turntable Electrical Control Box Assembly 00773206200220000

NO.	Material No.	Item and Spec	Qty	Remark
1	1020519658	Emergency stop button	1	Emergency stop switch
	1020509007	Button seat	1	
2	1020520084	Toggle switch	1	Emergency power and enable
3	1020520943	Key switch	1	
4	1020520084	Toggle switch	1	Jib rotation
5	1020520084	Toggle switch	1	Boom telescopic
6	1020520084	Toggle switch	1	Boom lifting
7	1020520084	Toggle switch	1	Tower boom lifting
8	1020520084	Toggle switch	1	Turntable rotation
9	1020520084	Toggle switch	1	Jib lifting
10	1020520084	Toggle switch	1	Platform rotation
11	1020520084	Toggle switch	1	Platform leveling
12	1020201651	Display	1	
13	1020303202	Relay	1	Ignition relay
14	1020103903	Controller	1	
15	1020705826	Diode terminal	2	
16	1029904980	Terminal	11	
17	1020604934	Fuse terminal	10	

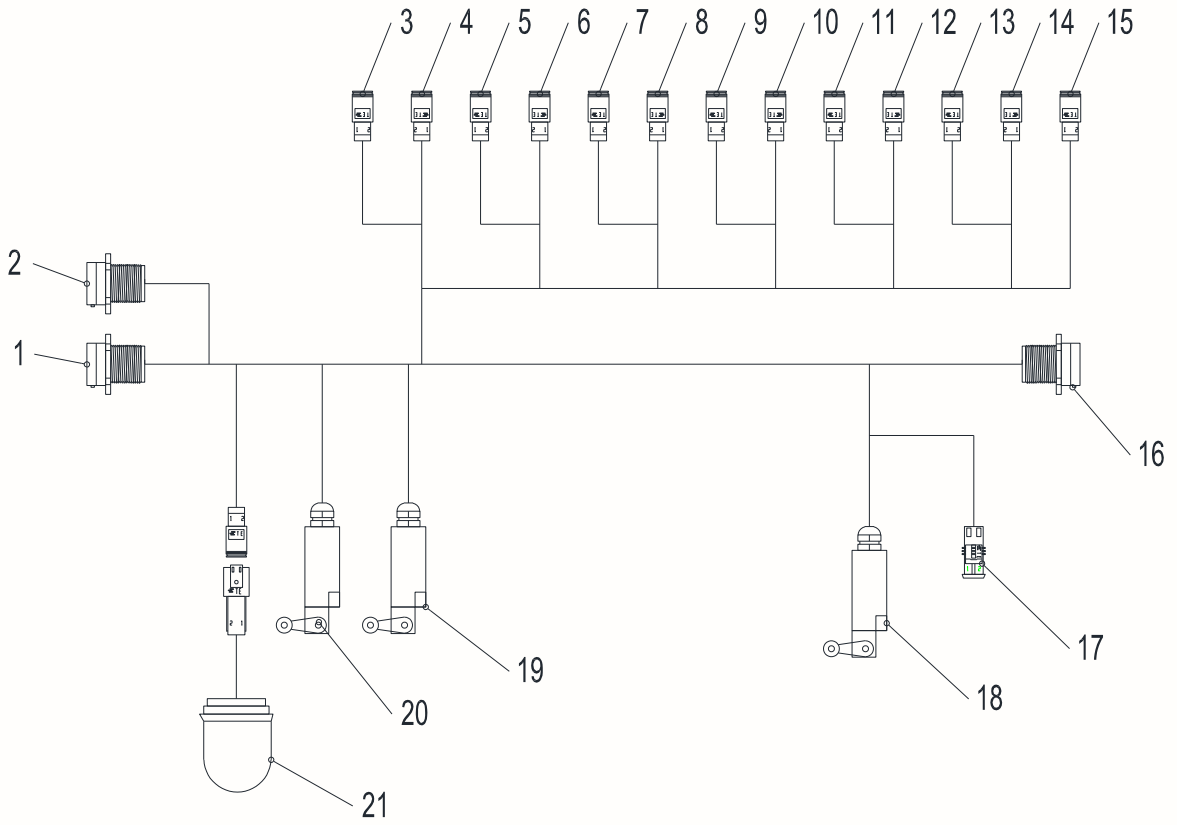
Platform Electrical Box Assembly 00773206200210000



Platform Electrical Box Assembly 00773206200210000

NO.	Material No.	Item and Spec	Qty	Remark
1	1020520136	Toggle switch	1	Illumination
2	1020520993	Boom handle	1	
3	1029802085	Nylon plug	1	
4	1020520083	Toggle switch	1	Drive orientation
5	1020520136	Toggle switch	1	Horn
6	1020520084	Toggle switch	1	Travel speed control
7	1020405061	Alarm indicator panel	1	
8	1020519658	Emergency stop button	1	
	1020509007	Button seat	1	
9	1020520084	Toggle switch	1	Platform leveling control
10	1020520994	Drive control handle	1	
11	1020520084	Toggle switch	1	Main boom telescopic
12	1020520084	Toggle switch	1	Tower boom lifting
13	1020520084	Toggle switch	1	Jib rotation
14	1020520084	Toggle switch	1	Jib lifting
15	1020520084	Toggle switch	1	Platform rotary switch
16	1020103903	Controller	1	
	1020103955	Connector assembly	1	
17	1022399012	Line slot	1	
18	1020404405	Flash buzzer	1	
19	1029904980	Terminal	7	
20	1029905392	Fuse terminal	4	
21	1029904980	Terminal	4	
22	1020703394	Deutsch connector	1	Cable chain harness

Turntable cable 00773206200230010

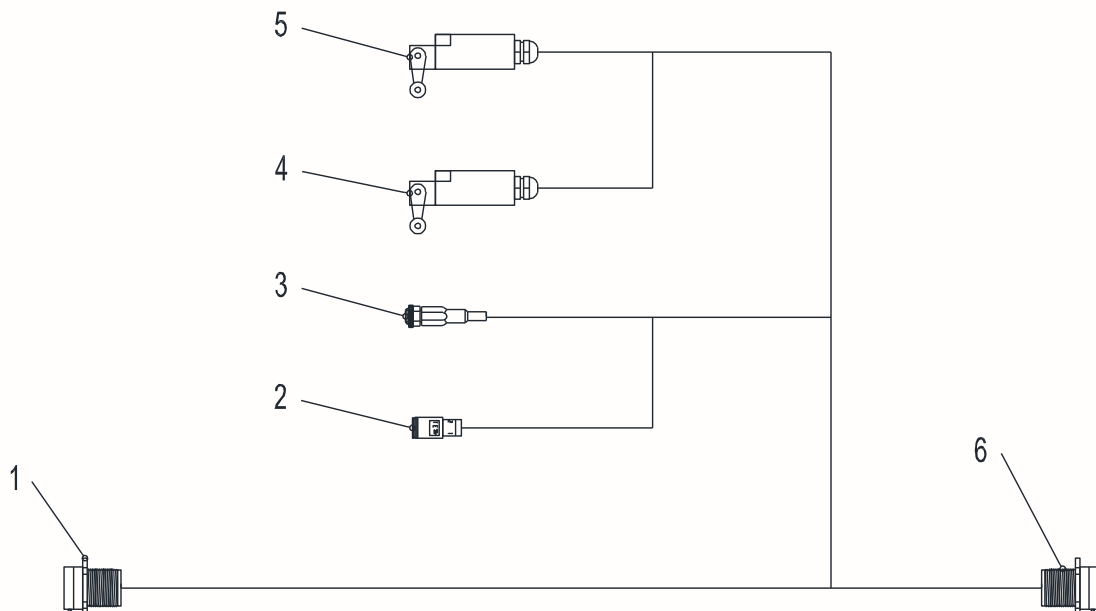


Turntable cable 00773206200230010

NO.	Material No.	Item and Spec	Qty	Remark
1	1022270089	Sheath	1	Turntable electric control box
	1029900398	Terminal	32	
2	1022200683	Sheath	1	Turntable electric control box
	1029900398	Terminal	48	
3	1020700951	Sheath	1	Leveling down valve
4	1020700951	Sheath	1	Leveling up valve
5	1020700951	Sheath	1	Turntable right-turn valve
6	1020700951	Sheath	1	Turntable left-turn valve
7	1020700951	Sheath	1	Boom extending valve
8	1020700951	Sheath	1	Boom retracting valve
9	1020700951	Sheath	1	Boom lowering valve
10	1020700951	Sheath	1	Boom lifting valve
11	1020700951	Sheath	1	Tower boom lifting valve
12	1020700951	Sheath	1	Tower boom lowering valve
13	1020700951	Sheath	1	Front wheel left-turn valve
14	1020700951	Sheath	1	Front wheel right-turn valve
15	1020700951	Sheath	1	Proportion control valve
16	1020706505	connector		ECU cable
17	/	Sheath		Alarm buzzer
18	1029906298	Limit switch- Tower boom stowed 1		
19	1029906298	Turntable angle limit switch		
20	1029906298	Limit switch- Tower boom stowed 2		
21	1020404399	Alarm light		

Boom Wires 00773206200230030

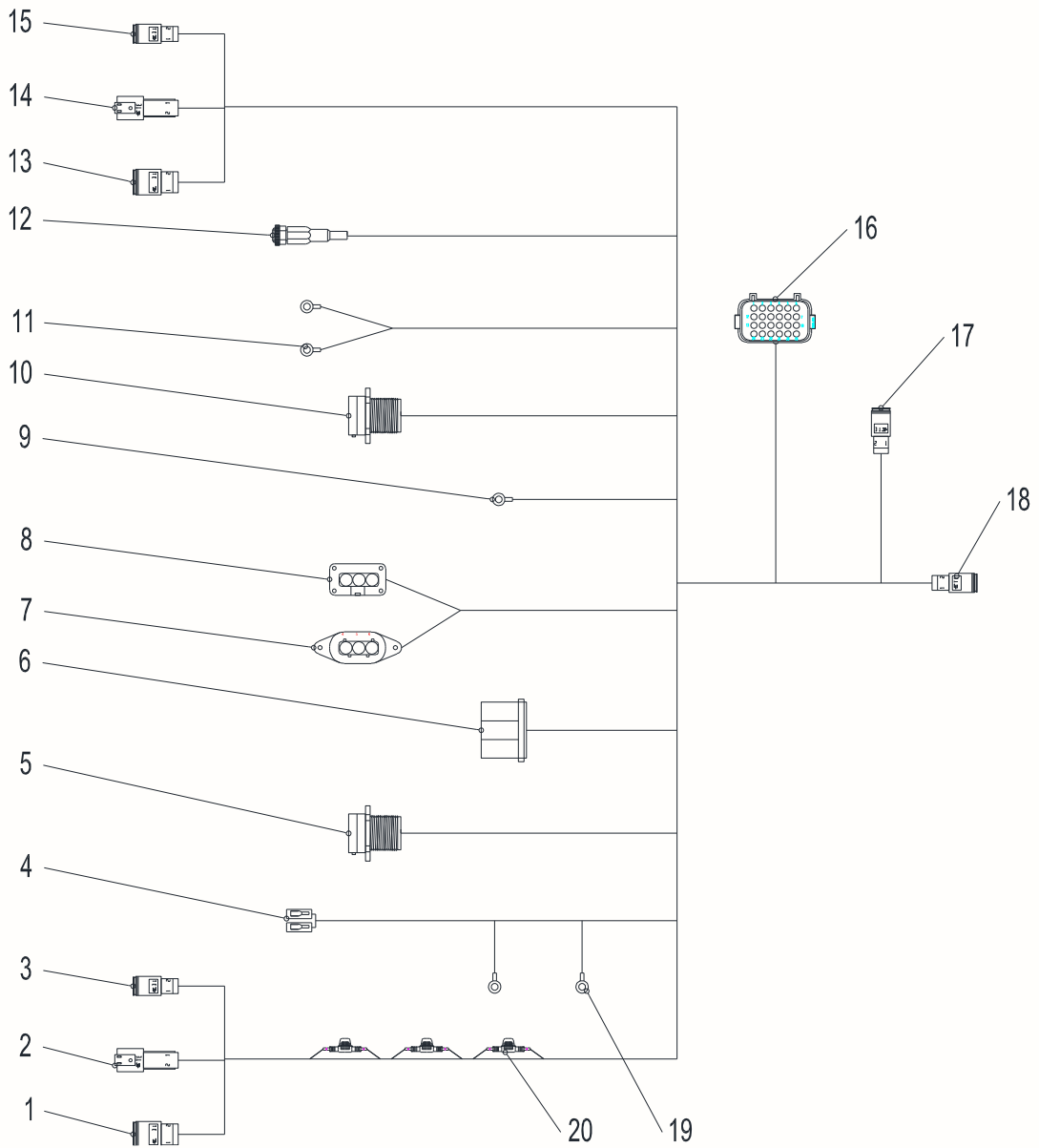
说明书



Boom wires 00773206200230030

NO.	Material No.	Item and Spec	Qty	Remark
1	1022270089	connector	1	
2	1020700540	Terminal resistance	1	
3	1021404019	Boom leveling angle sensor	1	
4	1029906298	Boom length limit switch 1	1	
5	1029906298	Boom length limit switch 2	1	
6	1020706505	connector	1	

Chassis Wires 00773206200230020

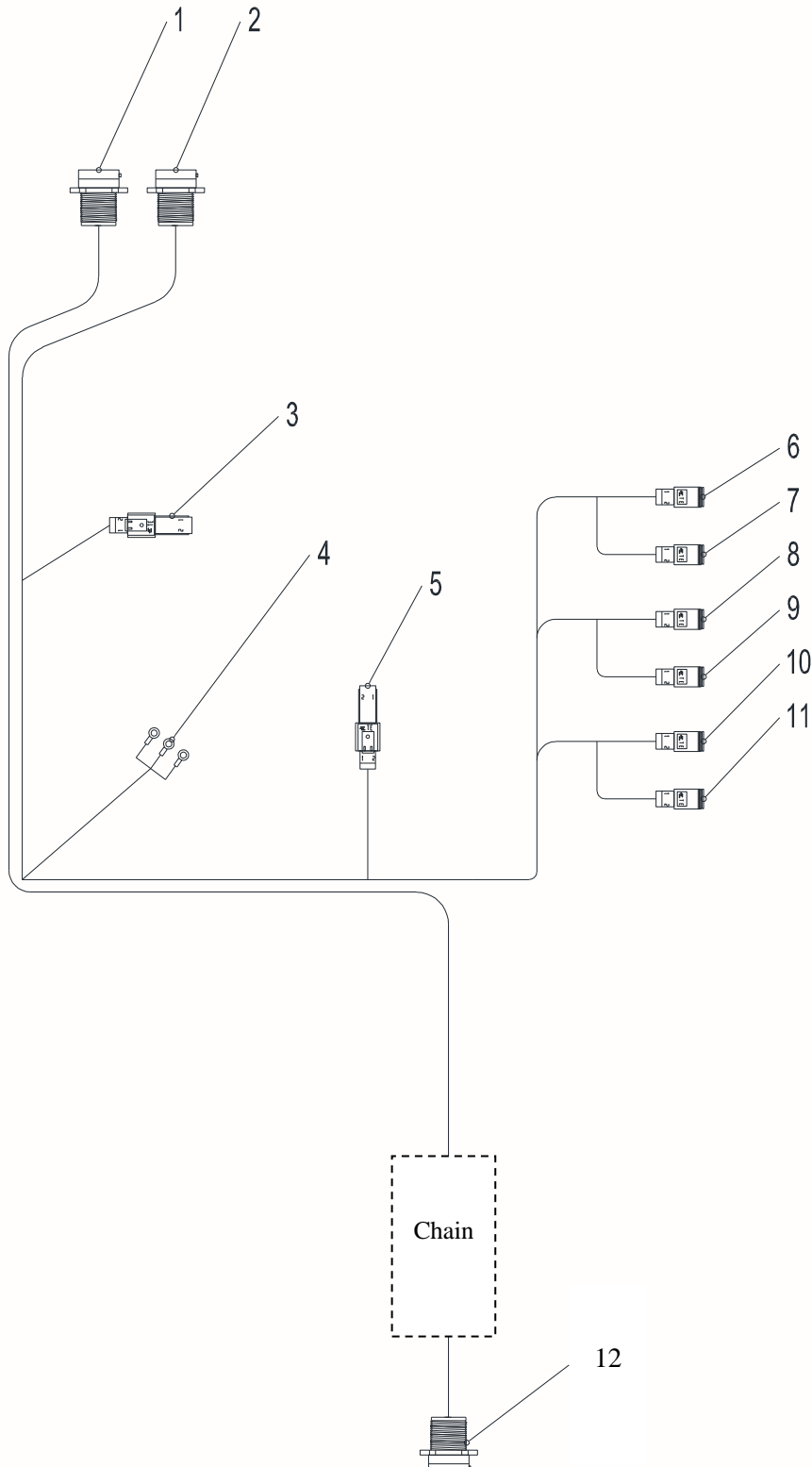


Chassis Wires 00773206200230020

NO.	Material No.	Item and Spec	Qty	Remark
1	1020103232	Sheath	1	Speed sensor
2	1029902114	Sheath	1	Electromagnetic brake
3	1029902113	Sheath	1	Temperature
4	1020303202	Relay	1	Main relay
5	/	Sheath	1	Right driver
6	/	Relay	1	Switch relay
7	/	/	1	DC Output
8	/	/	1	DC Input
9	/	Terminal	1	Controller power insurance
10	/	Sheath	1	Left driver
11	/	Terminal	1	Positive pole
12	1021404018	Frame angle sensor	1	
13	1020103232	Sheath	1	Speed sensor
14	1029902114	Sheath	1	Electromagnetic brake
15	1029902113	Sheath	1	Temperature
16	1020706399	Sheath	1	ECU cable
	1029900400	Terminal	24	
17	1020700951	Sheath		Charger
18	1029900385	Steering angle sensor		
19	/	Terminal		Negative pole
20	/	Fuse		

Platform Wires 00773206200230040
Chain Wires Change 00773206200240010

电
机
说
明
书



Platform Wires 00773206200230040
Chain Wires Change 00773206200240010

NO.	Material No.	Item and Spec	Qty	Remark
1	1029903711	Sheath	1	Upper connector of chain
2	1022200446	Sheath	1	Platform connector
3	1029906298	Anti-crushing switch	1	
4	1020521022	Foot switch	1	
5	1021404016	Load cell	1	
6	1020700951	Sheath	1	Jib lifting valve
7	1020700951	Sheath	1	Jib lowering valve
8	1020700951	Sheath	1	Jib right-swing valve
9	1020700951	Sheath	1	Jib left-swing valve
10	1020700951	Sheath	1	Platform left-swing valve
11	1020700951	Sheath	1	Platform right-swing valve
12	1020706399	Sheath	1	Cable lower connector

